



IRYNA BORYS BOHOSHEVYCH

SELECTED PROJECTS 2014-2022



IRYNA BORYS BOHOSHEVYCH

ARCHITECTURE AND DESIGN



Iryna Borys Bohoshevych
イリナ ボリス ボゴシェヴィチ

17/02/1987 (35 years)

〒807-0804 福岡県北九州市八幡西区医生ヶ丘6丁目5番103号

+81 070 4423 0931

irynaborys.es@gmail.com
iryna@irynaborys.com

web: irynaborys.com



- Native languages: Russian, Ukrainian, Spanish
- Proficient in English
- Mid-level Japanese (JLPT N3)



- Born in 1987 in Lviv, Ukraine
- Moved with family to Potes, Spain in 2002
- Architecture degree from University of Valladolid, Spain, in 2014
- Architecture and Sustainability master's degree from Polytechnic University of Catalonia in 2016
- Since 2017 and currently is a doctorate student at the University of Kitakyushu, Japan



- INTEGRATED INDOOR GREENERY SOLUTIONS
- PREFAB AND MODULAR CONSTRUCTION SYSTEMS
- LOW-TECH AUTOMATION AND FACILITIES
- EXPERIMENTAL AND HYBRID DESIGN



- self-sufficiency and homesteading
- horticulture and hydroponics
- natural sciences: ecology, biomechanics
- environmental psychology
- human-technology interaction
- industrial processes
- design theory and history



- autocad
- rhino+vray
- grasshopper
- photoshop
- revit
- energy plus
- inventor, cfd



- Licenced architect in Spain
- Awardee of prizes in design Workshops and conferences:
AILCD 2017, JIA Urban planning seminar 2017, AILCD 2018, Ismart 2019
- 2 filed patents for construction systems in 2021





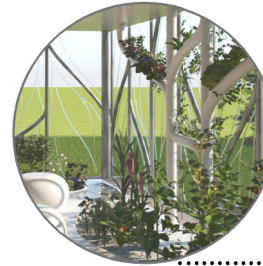
CONTENTS



PRESCHOOL AND RESIDENCE

LOCATION: VALLADOLID, SPAIN
PROGRAM: EDUCATIONAL, RESIDENTIAL
AREA: 3346 m²
DATE: FEBRUARY 2014

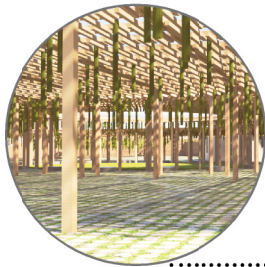
07



THE NEW VERNACULAR

LOCATION: UNDISCLOSED
PROGRAM: RESIDENTIAL
AREA: 83 m²
DATE: MAY 2019

29



HIBIKINO REFURBISHMENT

LOCATION: KITAKYUSHU, JAPAN
PROGRAM: URBAN PLANNING
AREA: 243 000 m²
DATE: AUGUST 2019

13



PENTHOUSE 2020

LOCATION: UNDISCLOSED HIGHRISE
PROGRAM: RESIDENTIAL
AREA: 40 m²
DATE: JANUARY 2020

37



iSMART BUILDING

LOCATION: QINGDAO, CHINA
PROGRAM: OFFICE, EDUCATIONAL
AREA: 13'0 m²
DATE: AUGUST 2019

15



MVP SEAT

INDUSTRIAL DESIGN OBJECT
DATE: SEPTEMBER 2021

45



RESEARCH GREENHOUSE

LOCATION: KITAKYUSHU, JAPAN
PROGRAM: AGRICULTURAL
AREA: 27.6 m²
DATE: OCTOBER 2019

23



CONSTRUCTIVE SYSTEMS

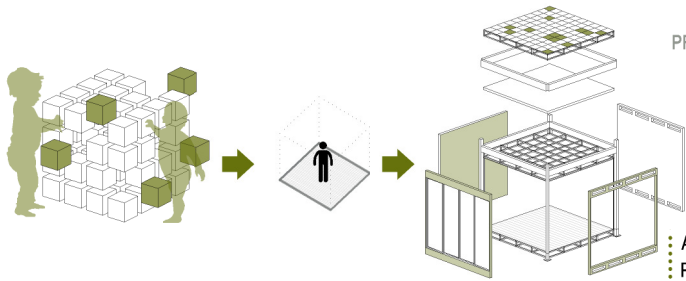
INDOOR AUTOMATION,
EMBEDDED GREENERY
DATE: JUNE 2021

47



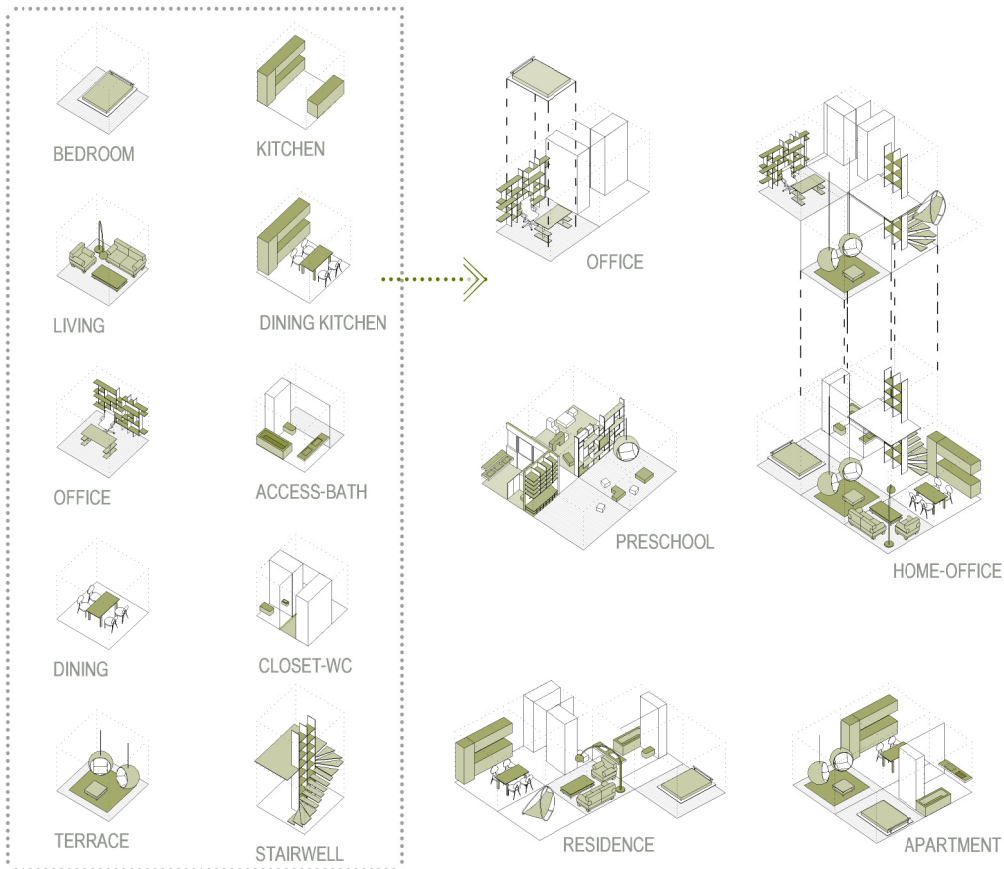
PRESCHOOL AND RESIDENCE

LOCATION: VALLADOLID, SPAIN
 PROGRAM: EDUCATIONAL, RESIDENTIAL
 AREA: 3346 m²
 DATE: FEBRUARY 2014

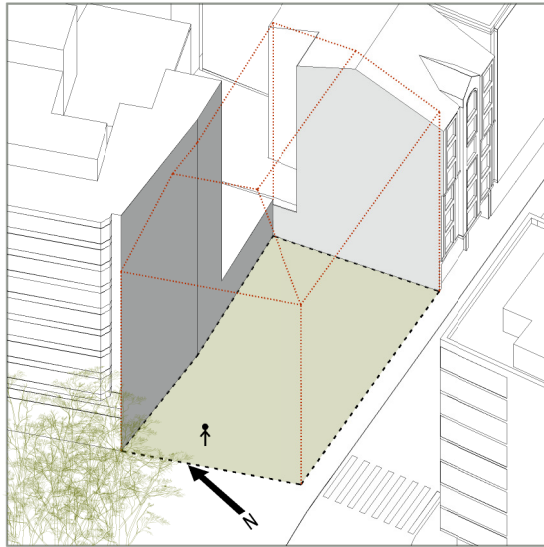


ASSEMBLY
 PAGE 09

MODULAR PREFAB BUILDING



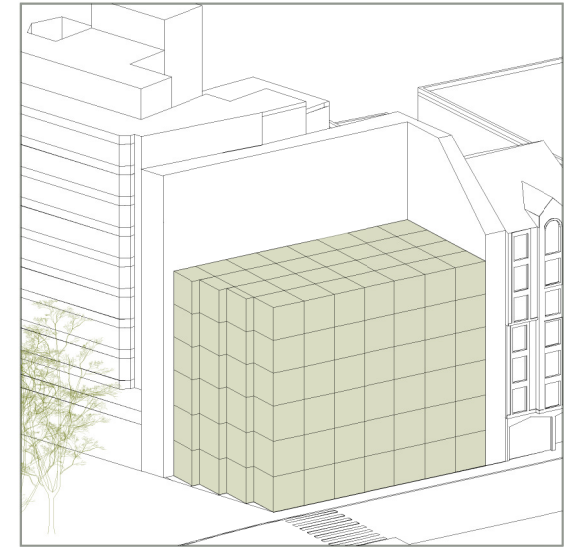
COMPOSITION PROCESS



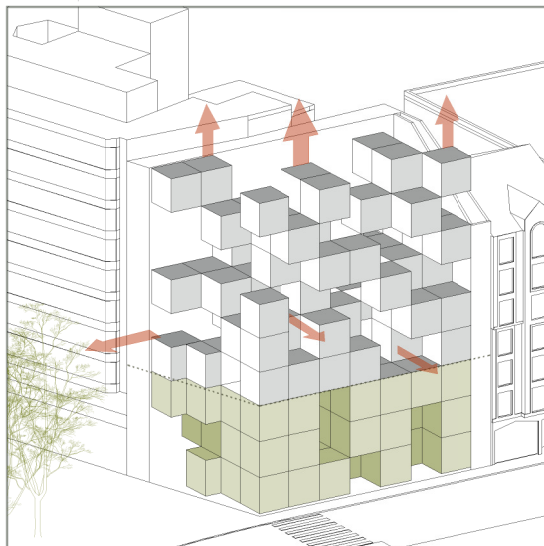
0. IRREGULAR AND SMALL CORNER PLOT OF LAND



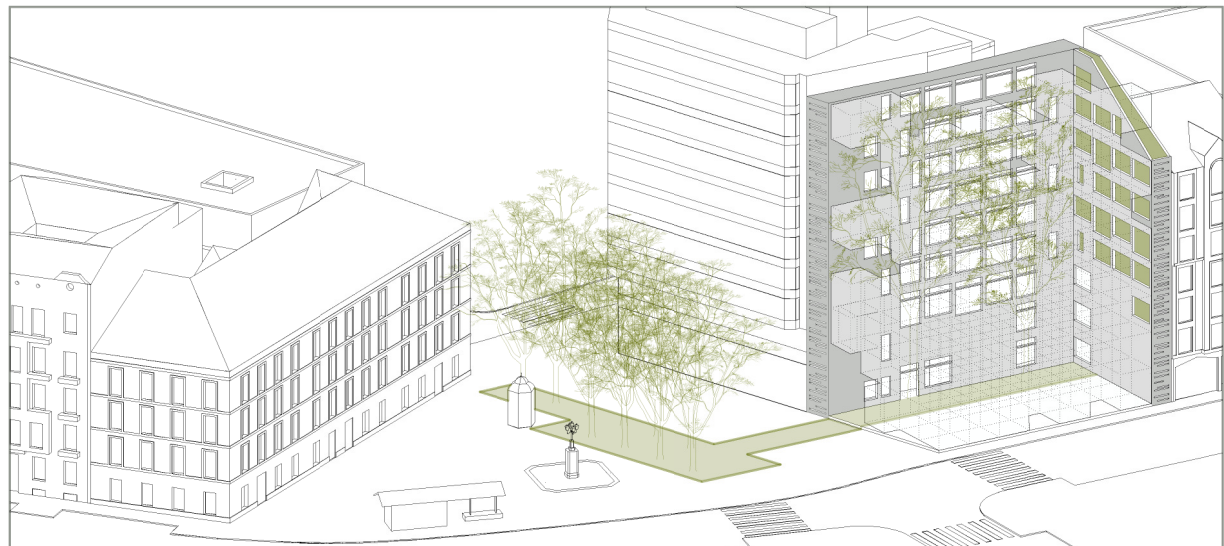
1. BACK WALL FOR FIRE PROTECTION WITH STAIRS AND FACILITIES



2. MAIN PORTION OF THE SITE FILLED WITH MODULAR CUBES

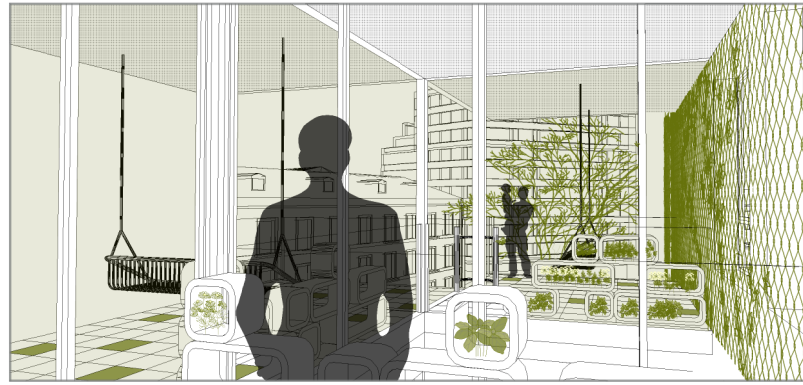
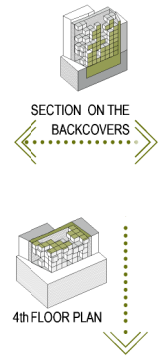


3. FOR AIR, VIEWS AND USE CUBES FLOAT UP AND OUT

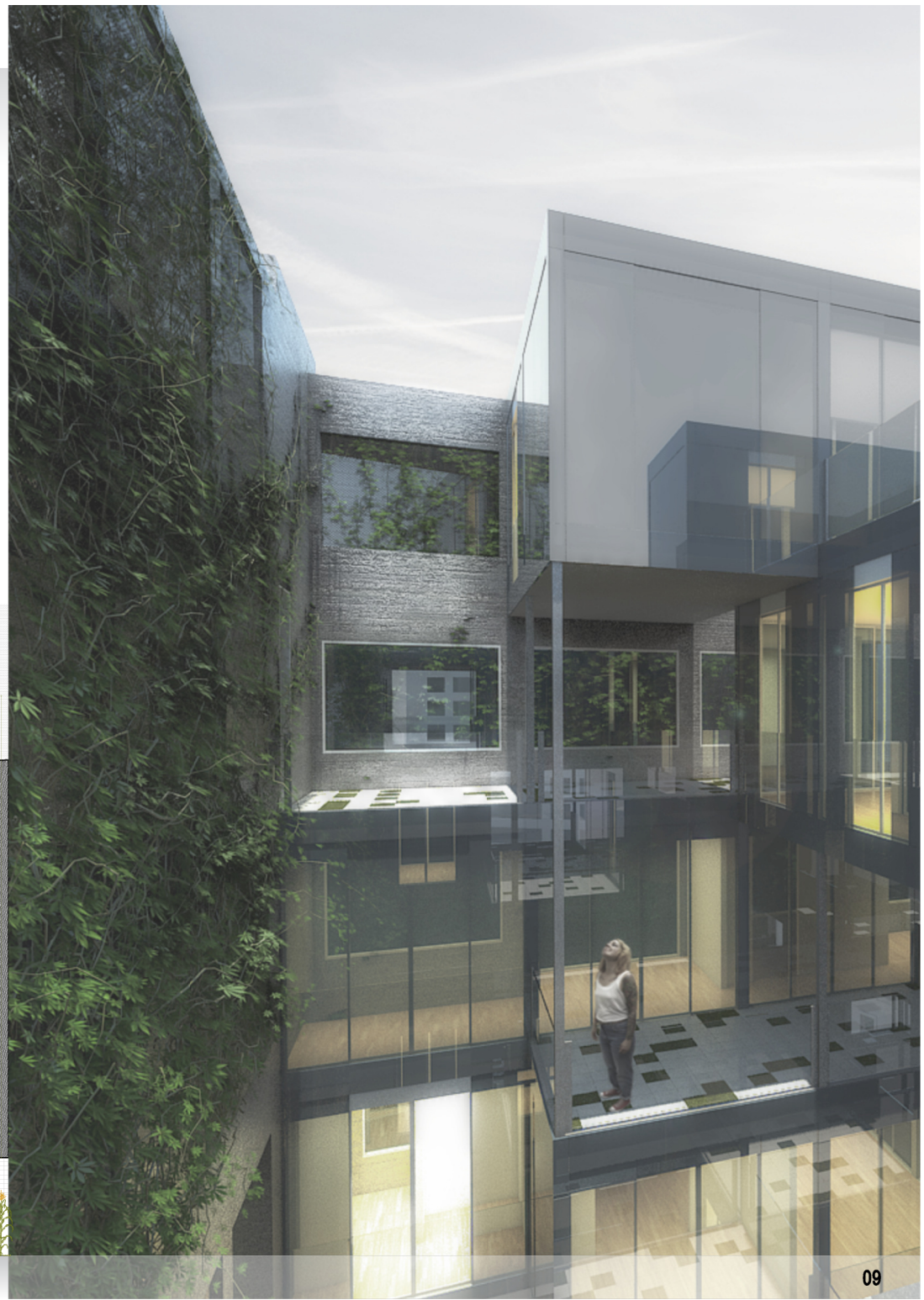


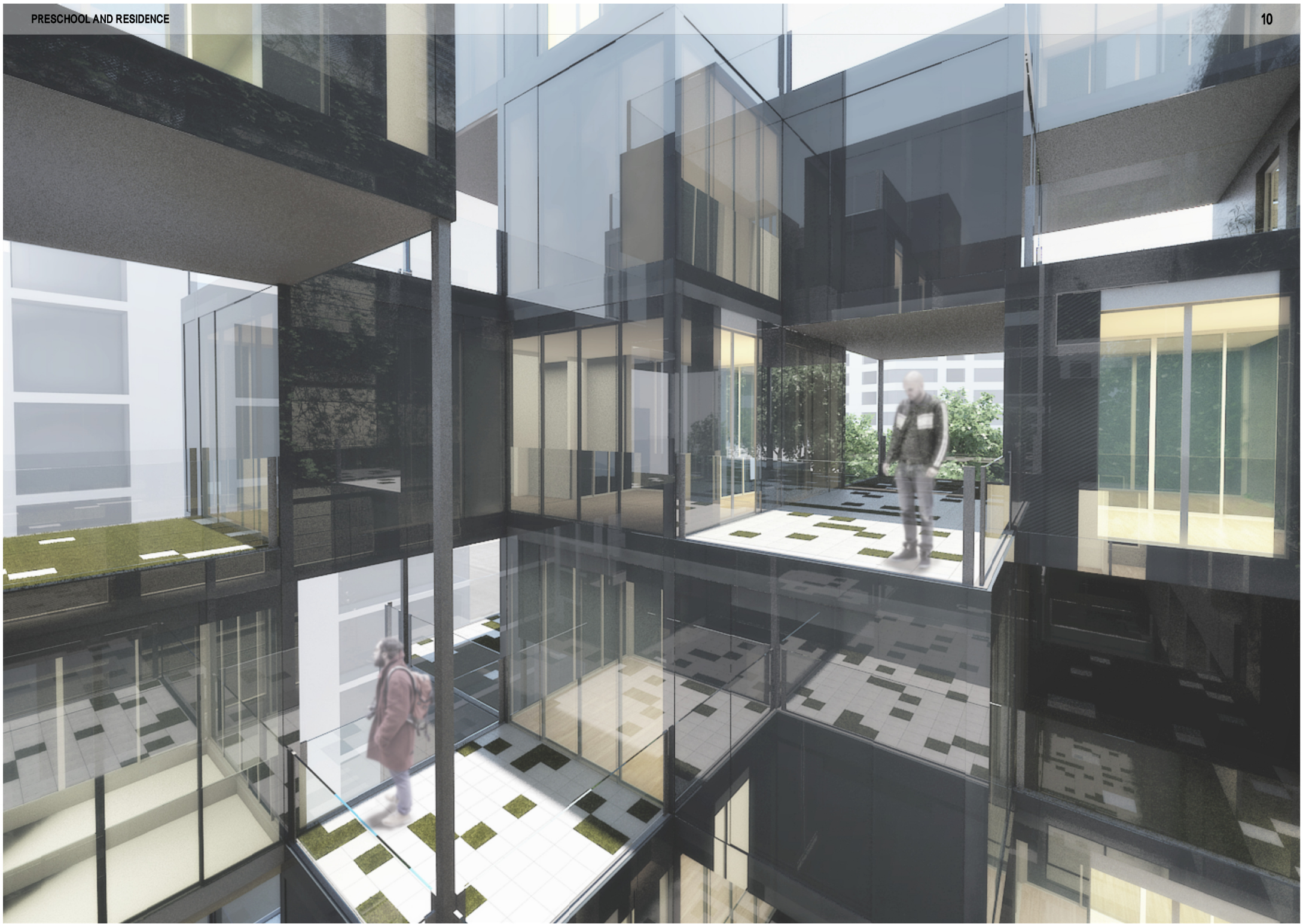
4. BACK WALL GETS FILLED WITH GREENERY TO CREATE A GREEN CORRIDOR ALONG THE ACCESS FROM THE PEDESTRIAN-FRIENDLY PLAZA

INNER SPACE

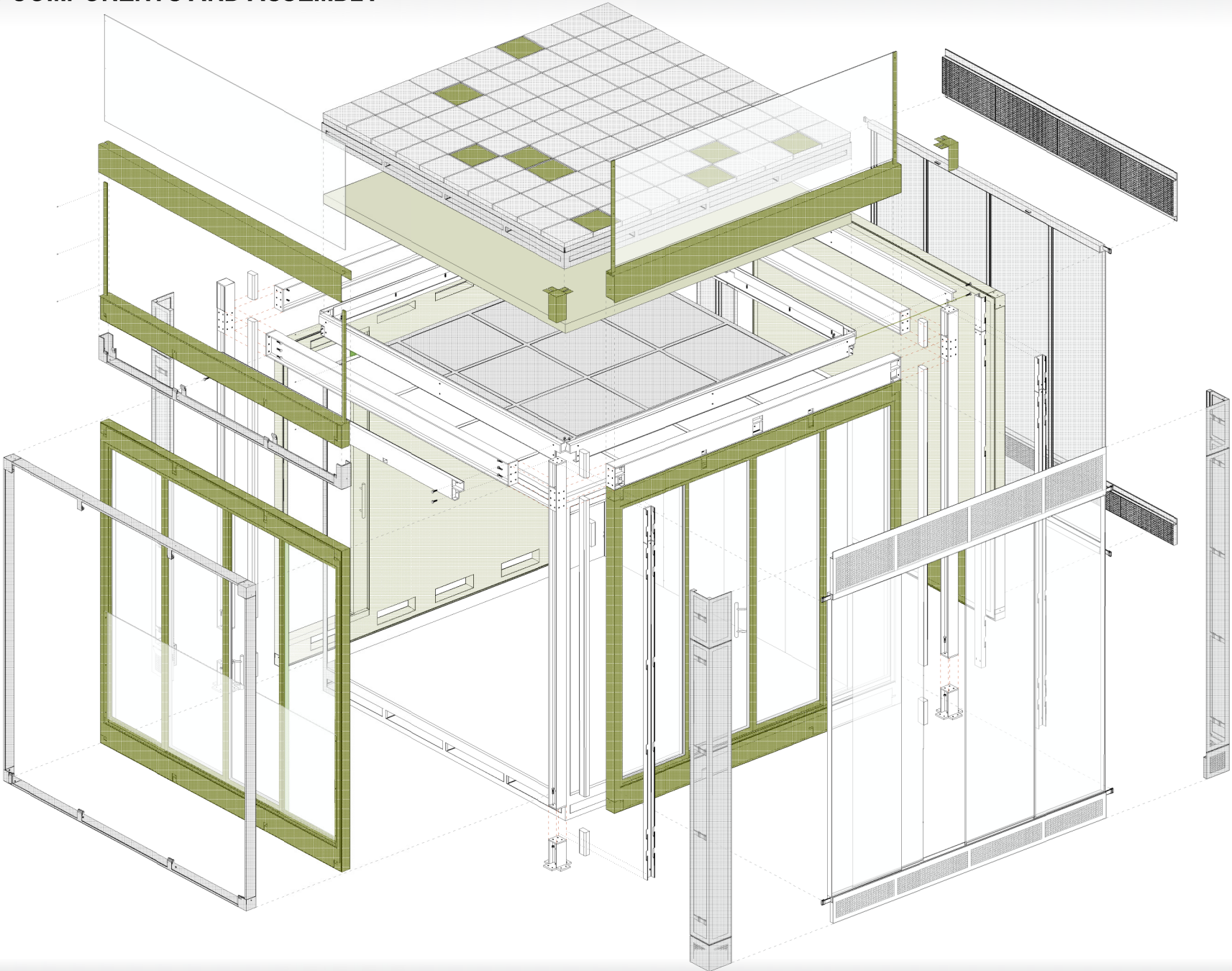


PRESCHOOL AND RESIDENCE





BUILDING COMPONENTS AND ASSEMBLY



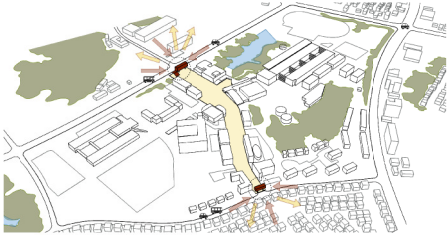


HIBIKINO REFURBISHMENT

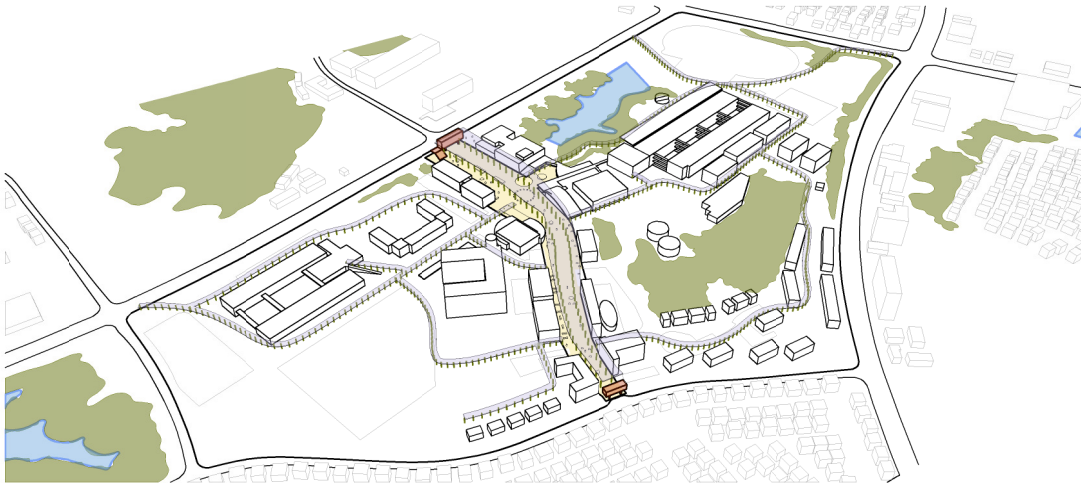
1. PEDESTRIAN MAIN STREET



2. BUS STOPS AT BOTH ENDS



3. COVERED MAIN STREET



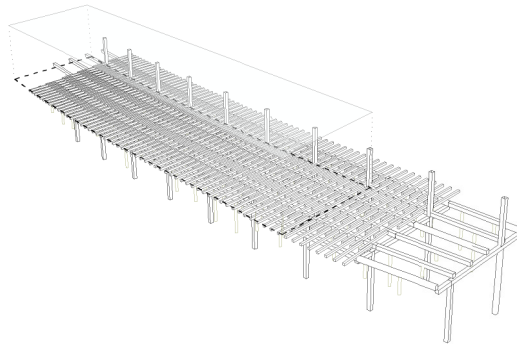
PROPOSAL MASTERPLAN AXONOMETRIC

LOCATION: KITAKYUSHU, JAPAN

PROGRAM: URBAN PLANNING

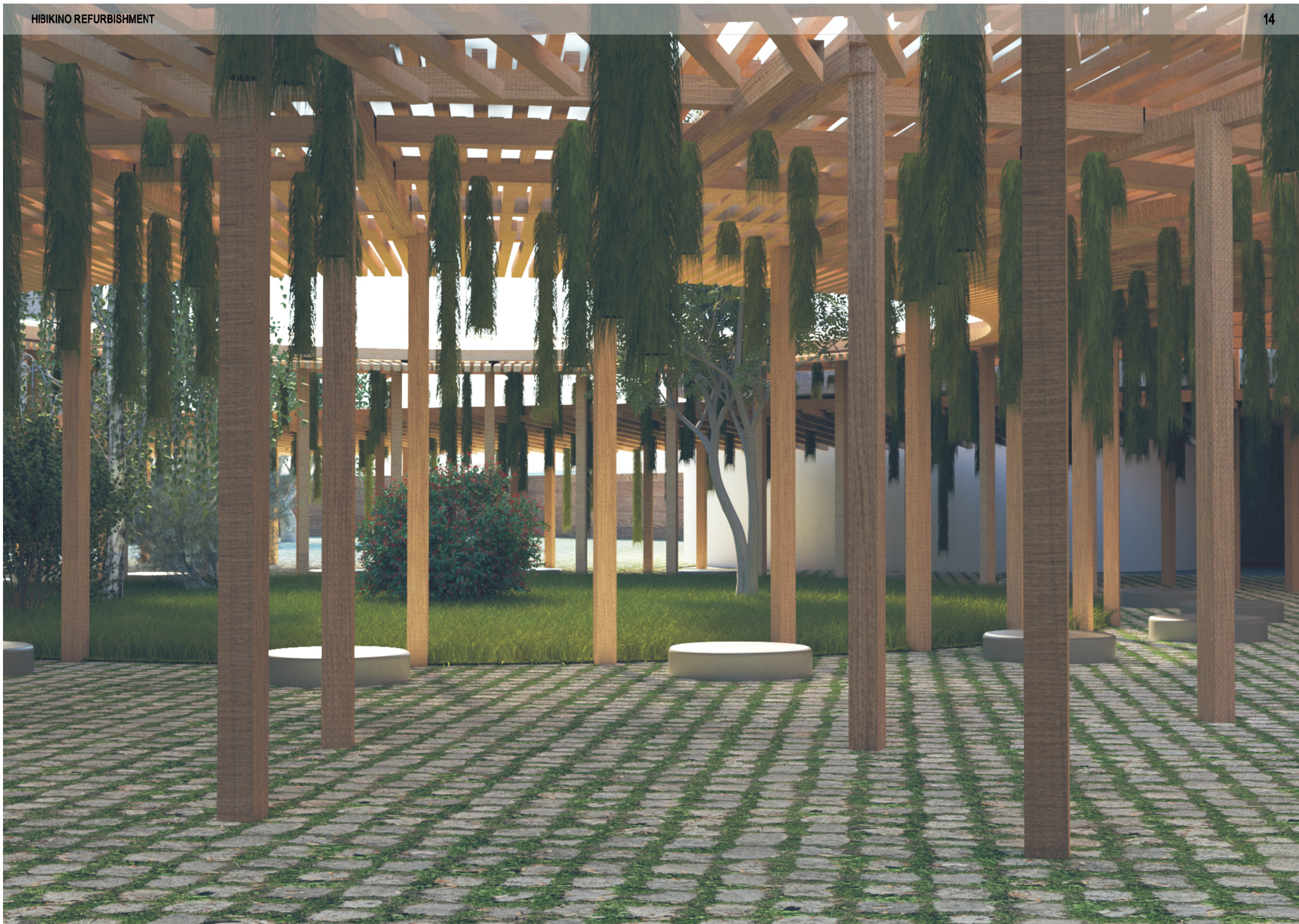
AREA: 248 000 m²

DATE: AUGUST 2019







STREET COVER
STRUCTURE

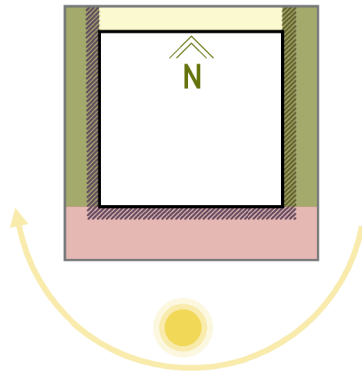




iSMART BUILDING

PLANT DISTRIBUTION GUIDE

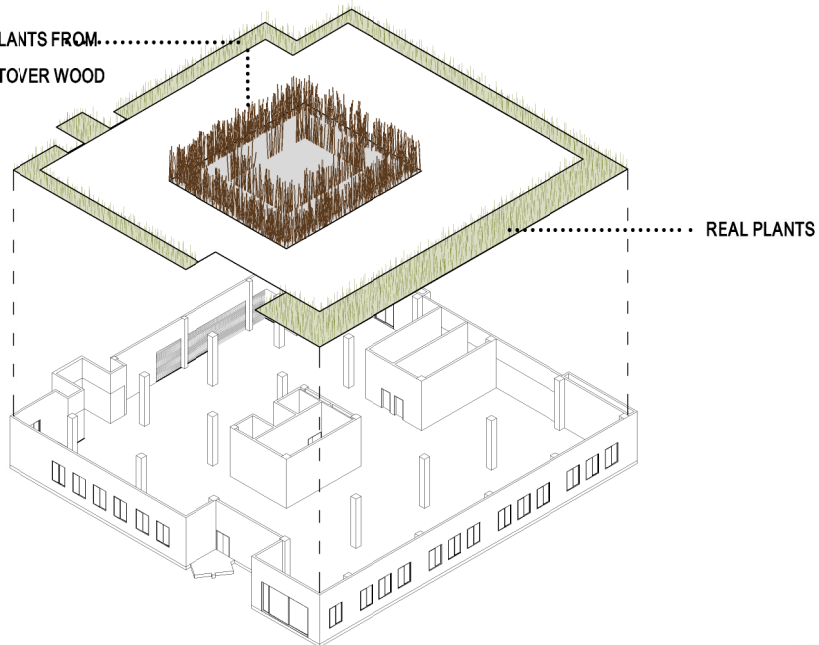
-  **FRUIT BEARING PLANTS**
8-10 SUN HOURS
-  **LEAFY VEGETABLES**
4-6 SUN HOURS
-  **GRASSES, PERENNIALS**
0-2 SUN HOURS
-  **UNDERSTORY PLANTS**
4-8 SUN HOURS



LOCATION: QINGDAO, CHINA
PROGRAM: OFFICE, EDUCATIONAL
AREA: 1310 m²
DATE: AUGUST 2019

COMPOSITION

CONCEPTUAL PLANTS FROM.....
RESEARCH LEFTOVER WOOD





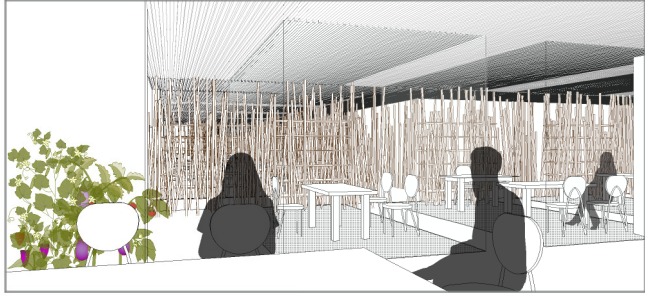
OFFICE FLOOR SPACE



1. OPEN WORKSPACE



2. WINDOW-FACING DESK AREA



3. MEETING AREA AND PRIVATE OFFICES

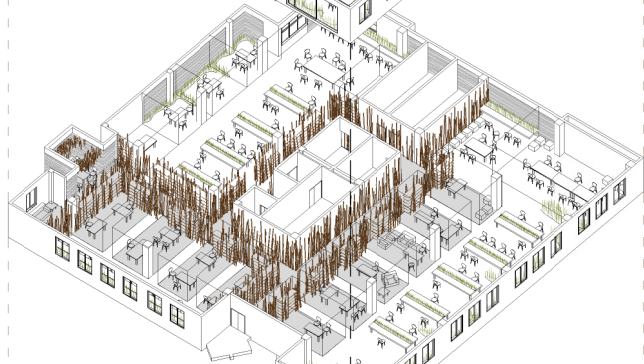


RENOVATED SPACES

WORKSHOP AND
CONFERENCE
FLOOR



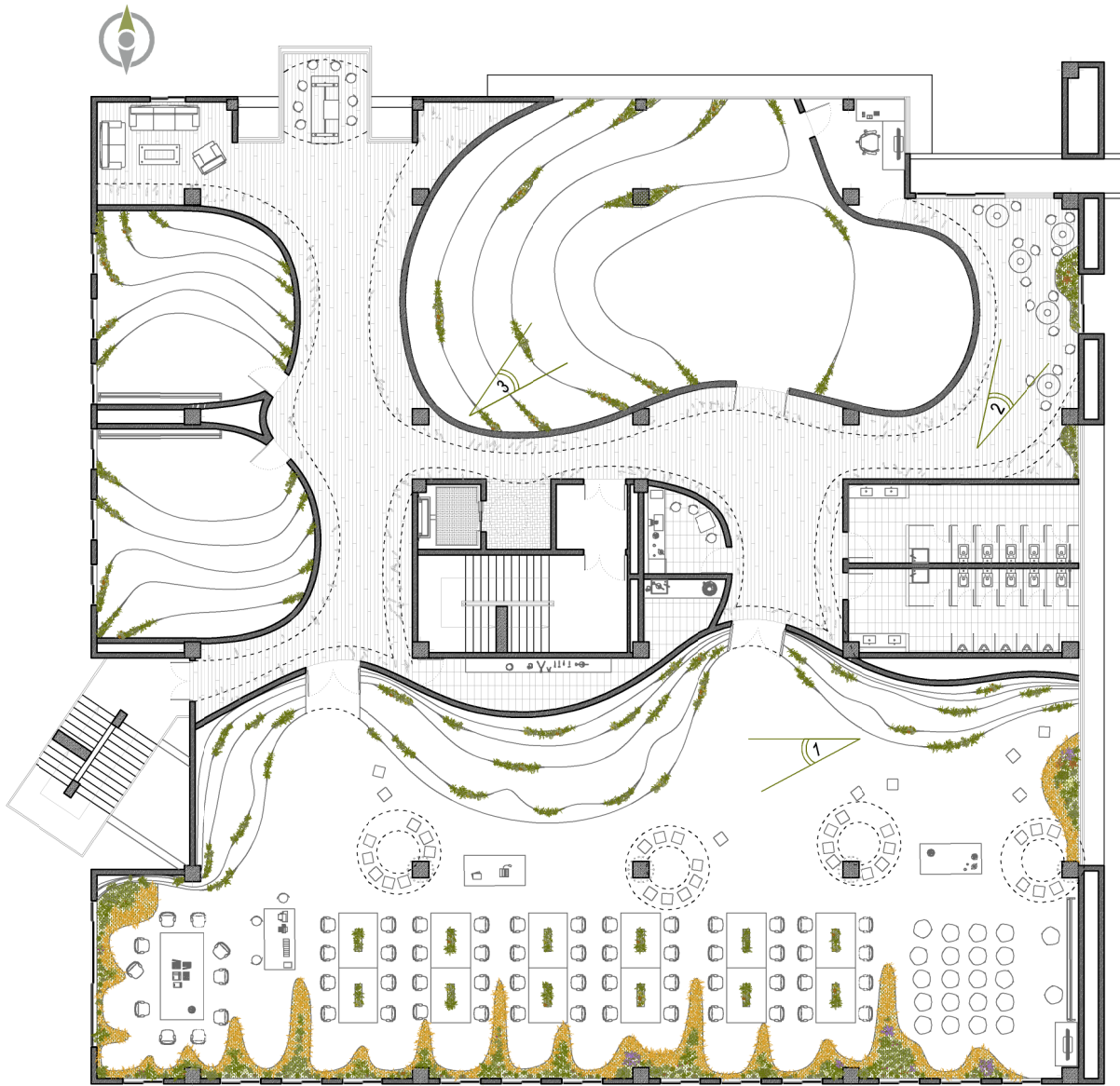
OFFICE FLOOR



CLASSROOMS
FLOOR



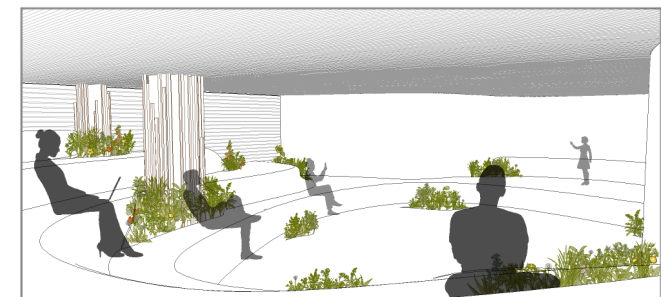
WORKSHOP SPACE



1. WORKSHOP LOUNGE SPACE

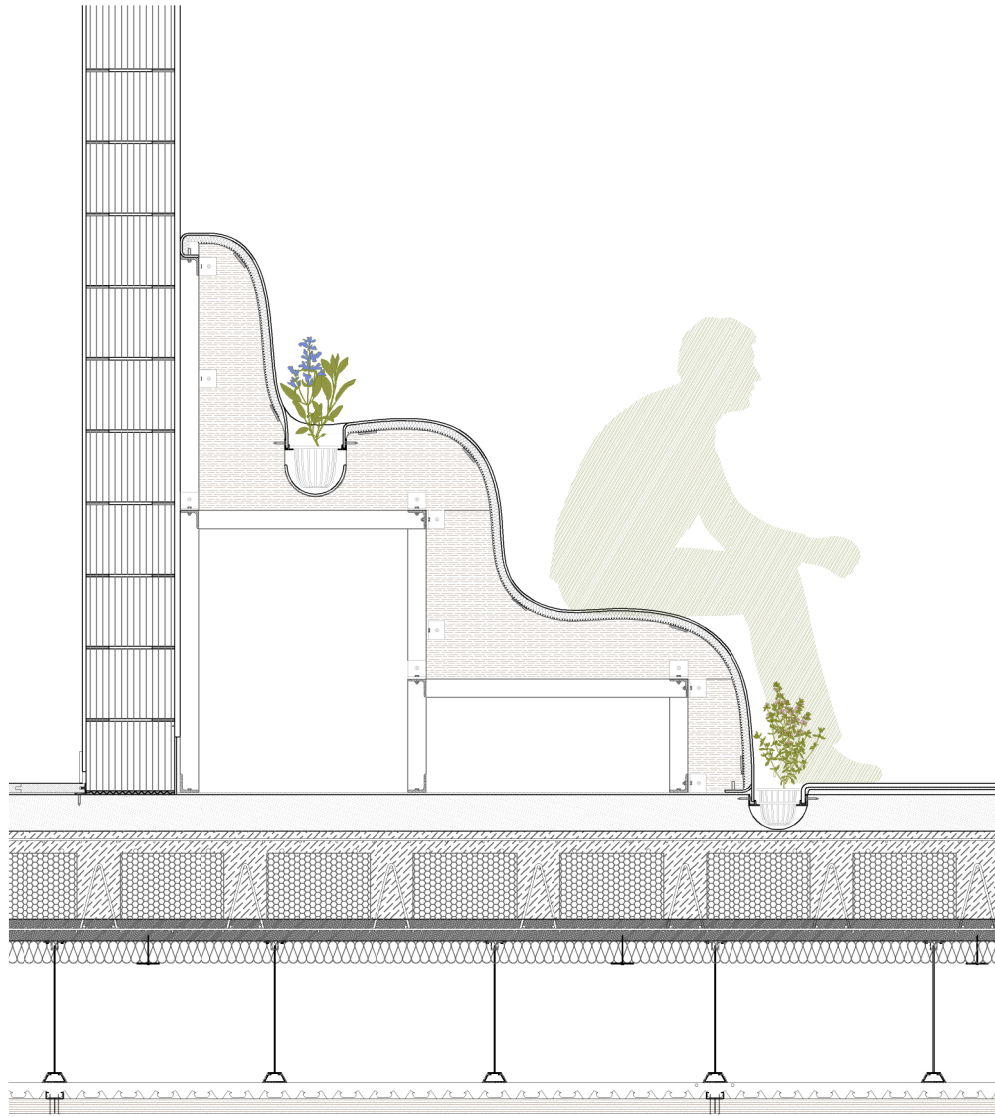


2. HALLWAY LUNCH AND REST AREA



3. AUDITORIUM WASHERS

WASHERS CONSTRUCTION





RESEARCH GREENHOUSE



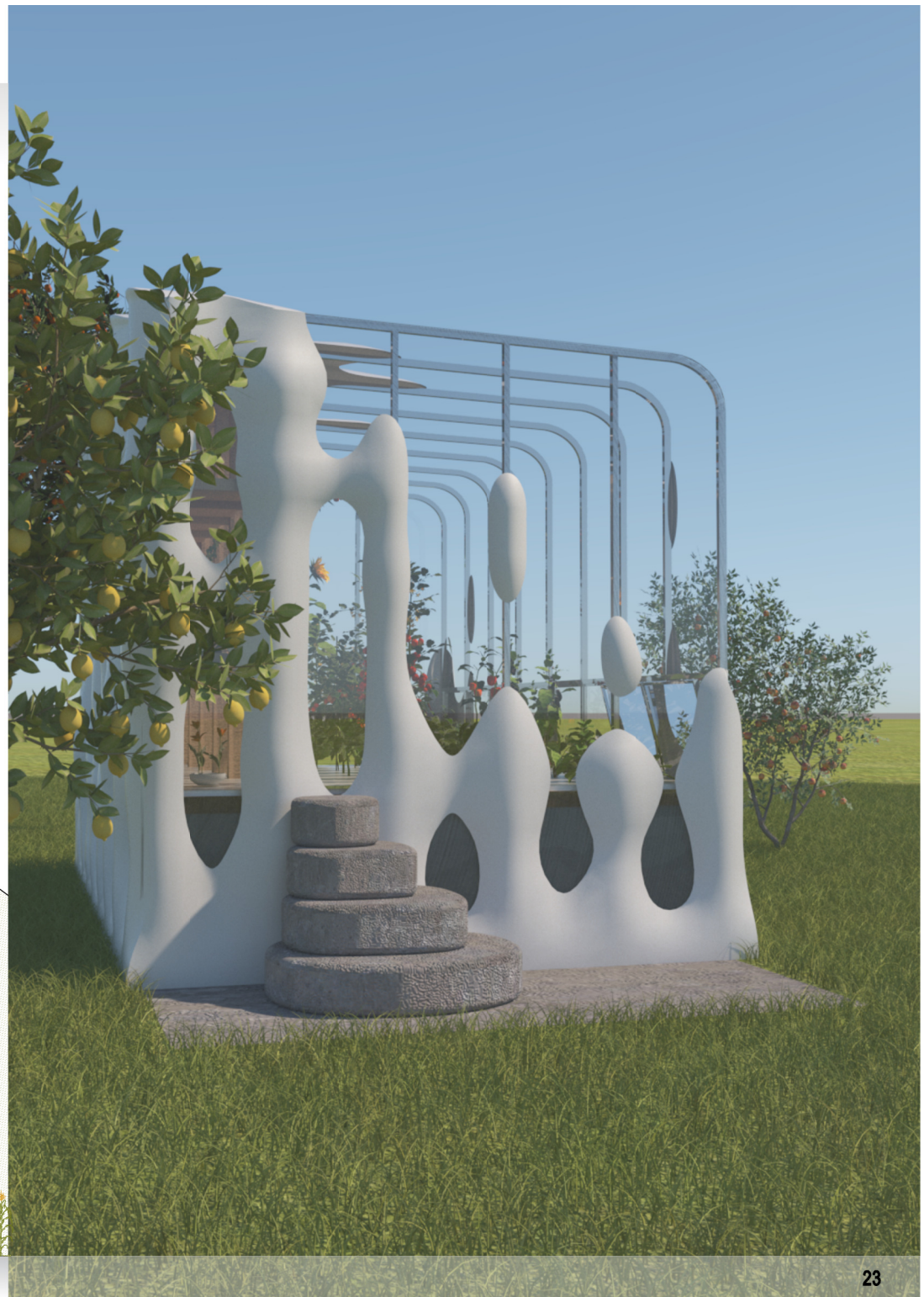
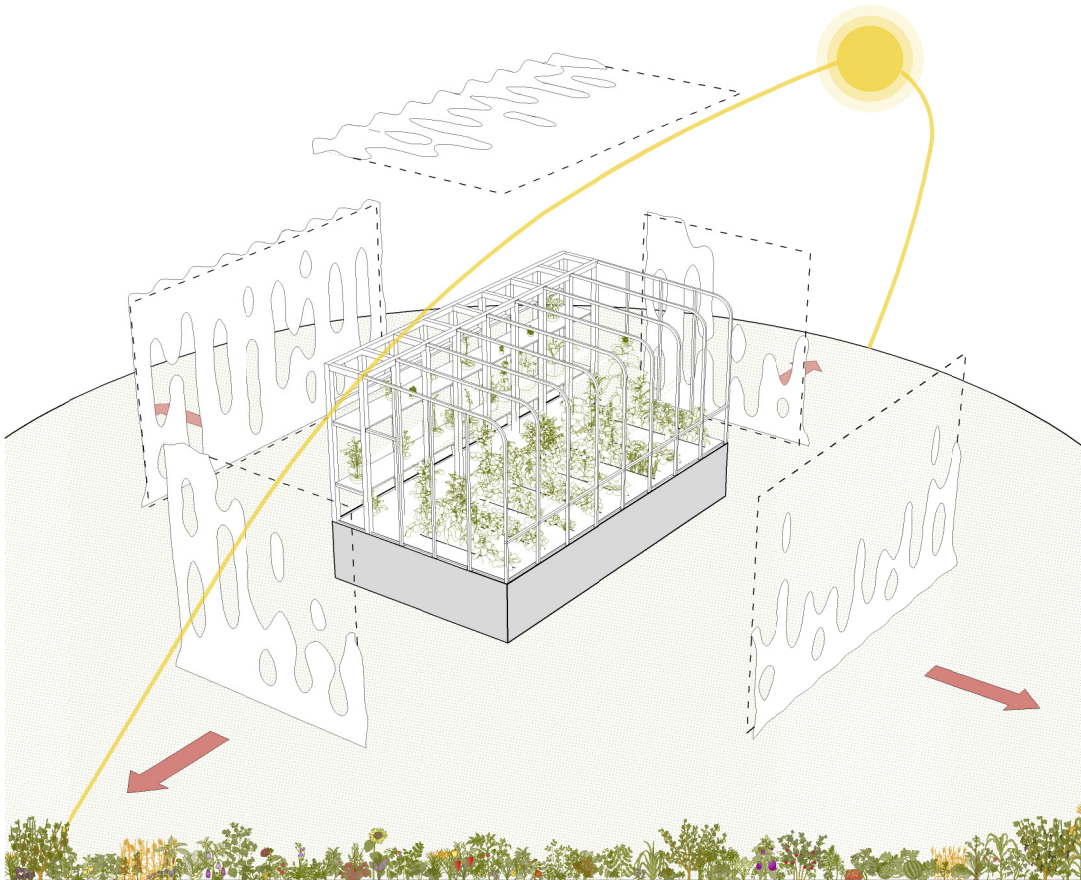
LOCATION: KITAKYUSHU, JAPAN

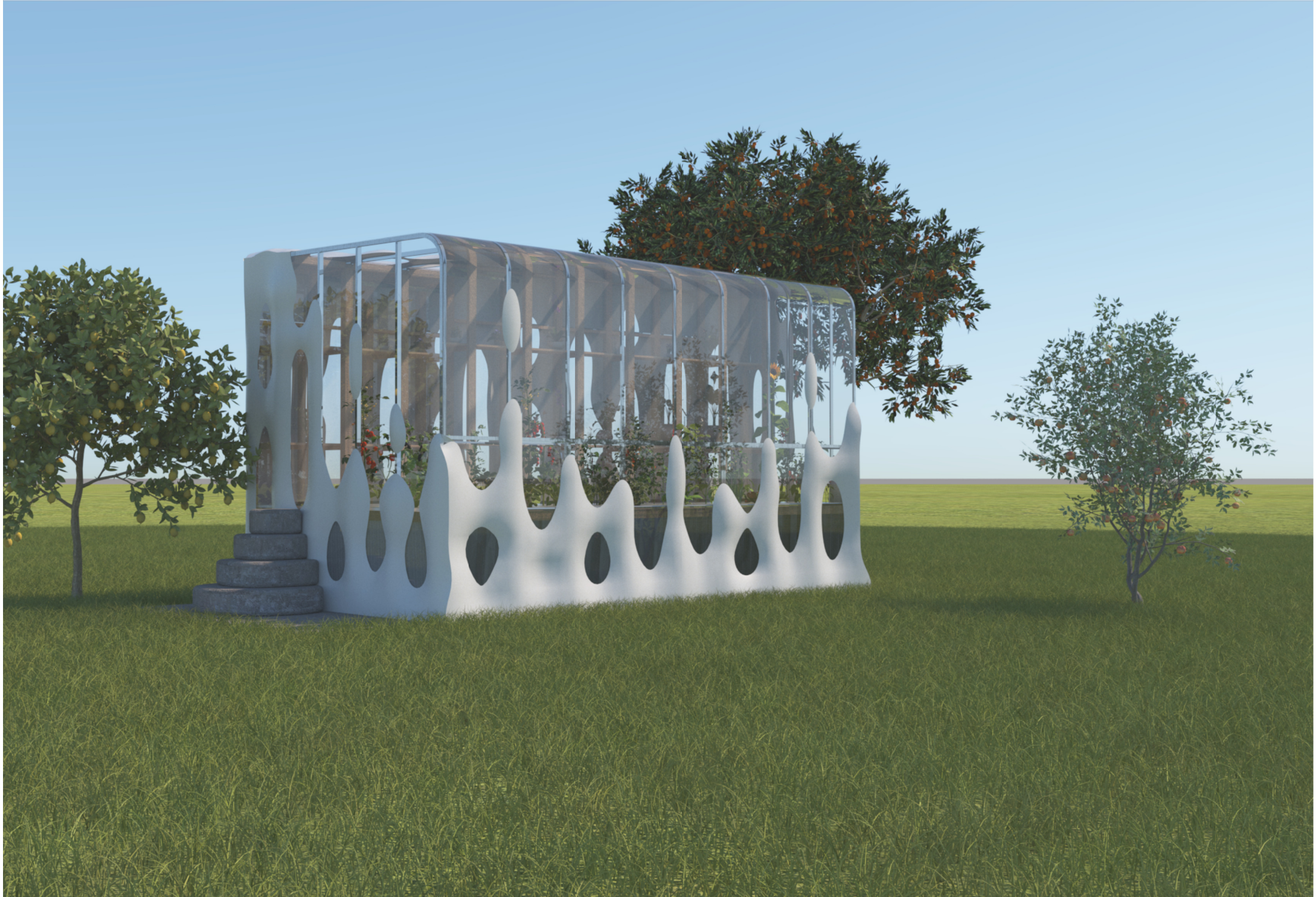
PROGRAM: AGRICULTURAL

AREA: 27.6 m²

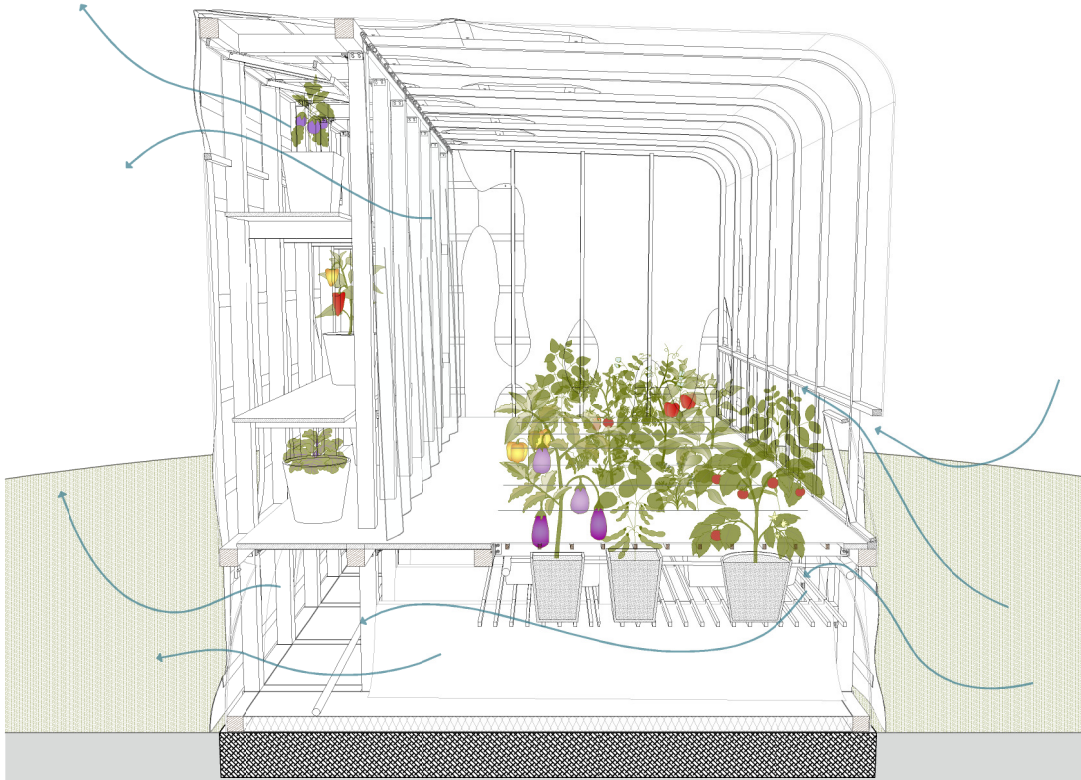
DATE: OCTOBER 2019

SUN-ORIENTED FACADE PATTERN



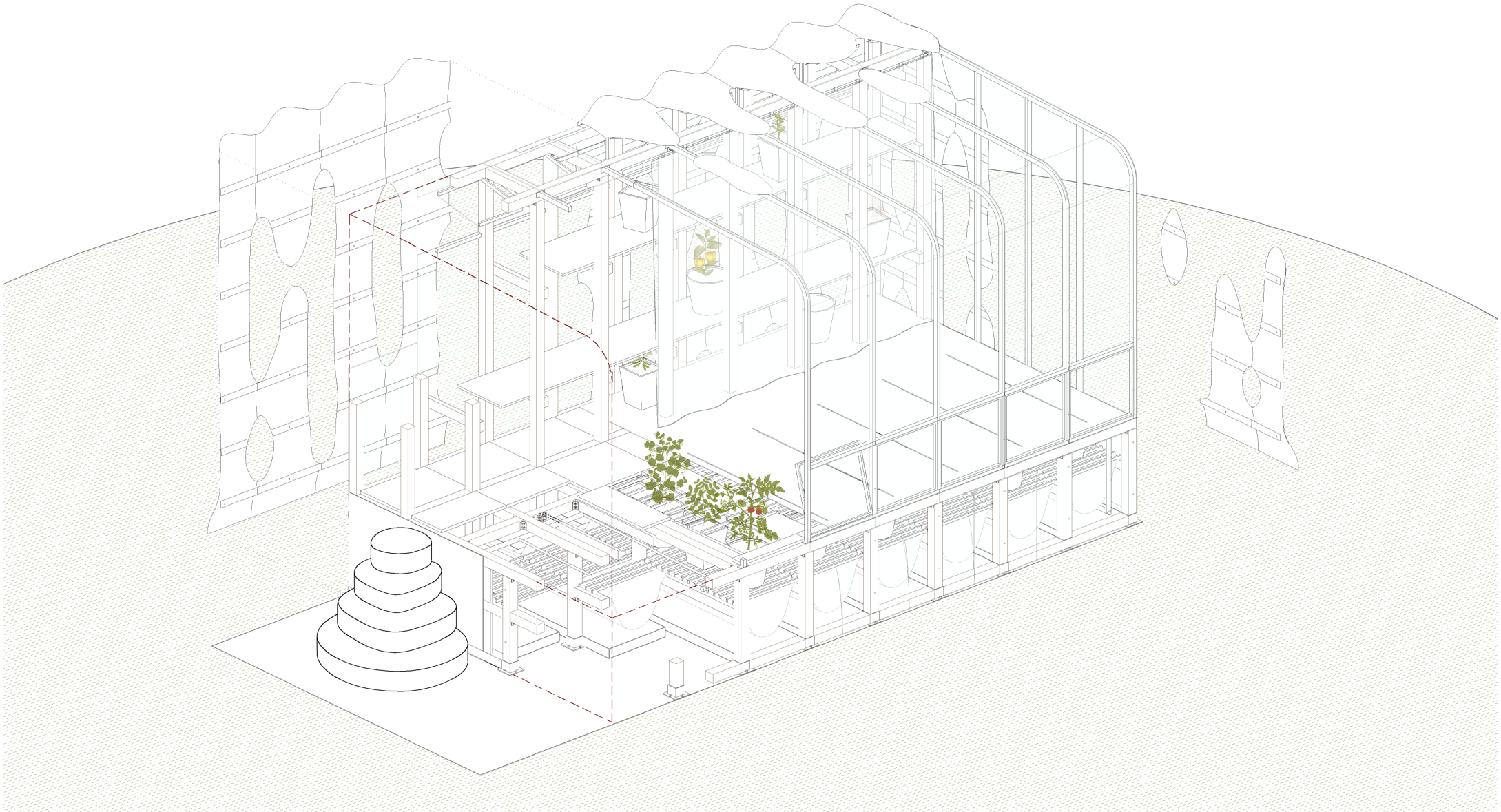


FUNCTIONALITY





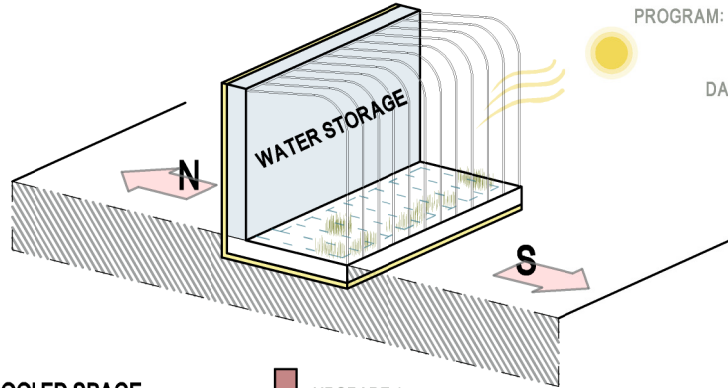
CONSTRUCTION AND MONTAGE





THE NEW VERNACULAR

1. PASSIVE SOLAR GREENHOUSE



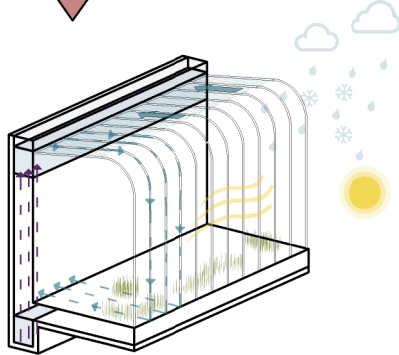
LOCATION: UNDISCLOSED
PROGRAM: RESIDENTIAL
AREA: 83 m²
DATE: MAY 2019

2. WATER COOLED SPACE

UPGRADE 1



CONSTANT WATER
MOVEMENT

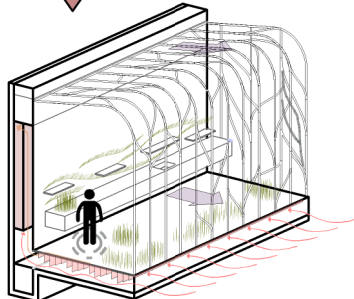


3. LOW TECH AUTOMATION

UPGRADE 2

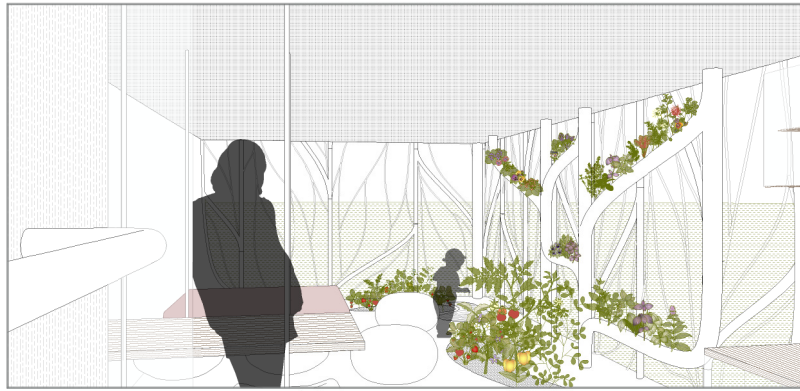


USE THE FLOWING
WATER FOR FUNCTIONS

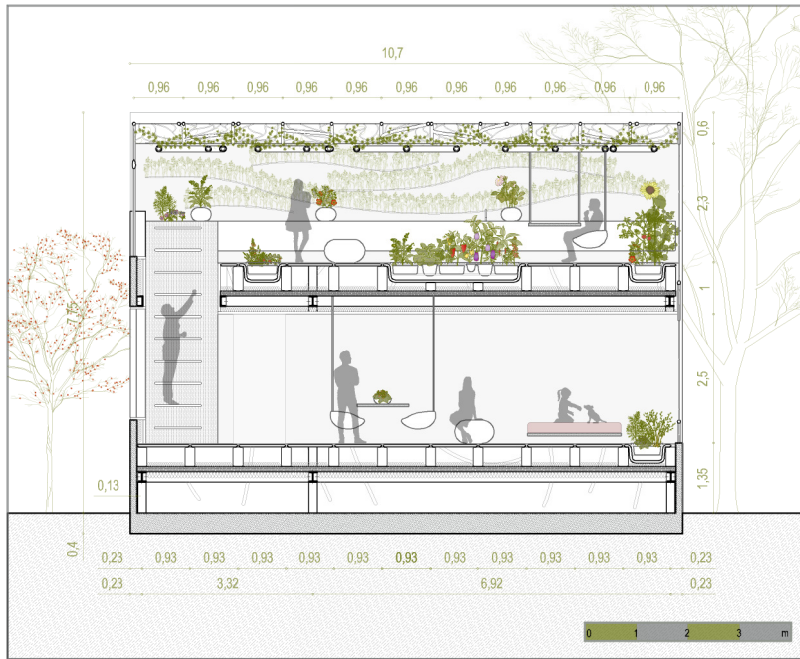




LIVING SPACE

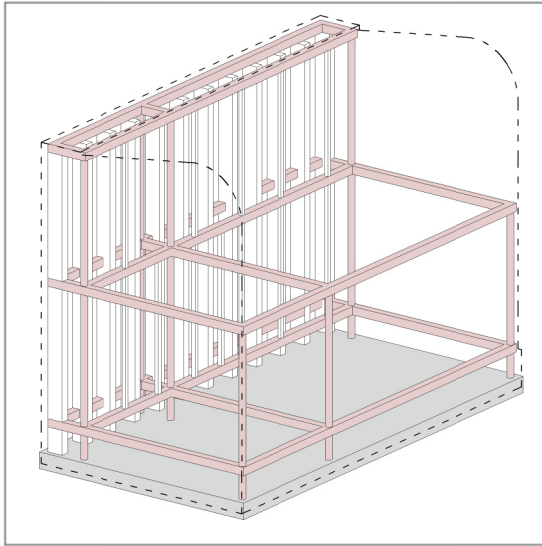


RESIDENCE AND HOME OFFICE SECTION

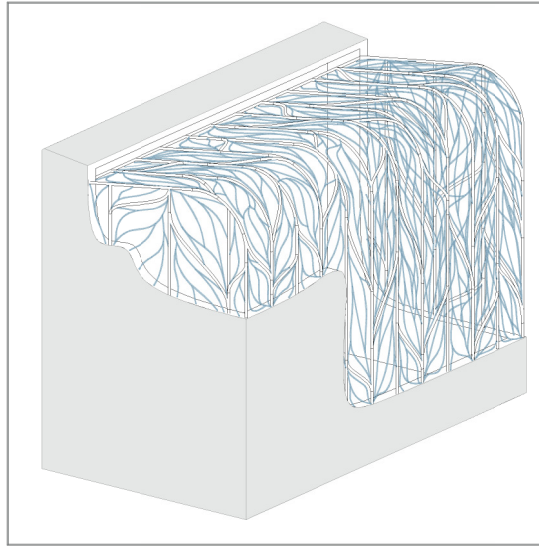




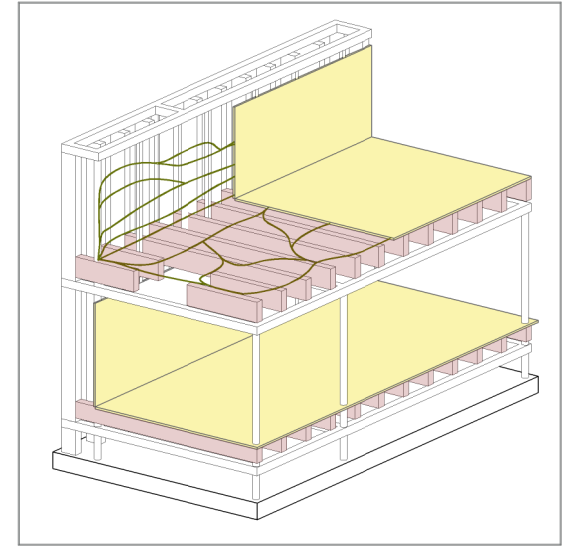
COMPONENTS AND FUNCTIONALITY



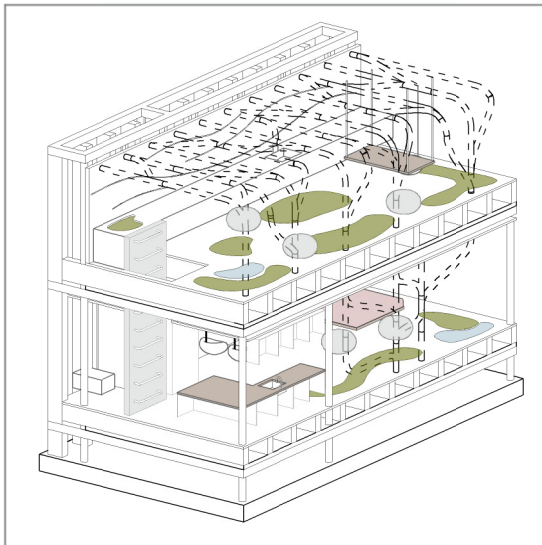
1. STEEL STRUCTURE WITH ADDITIONAL WOODEN FRAME



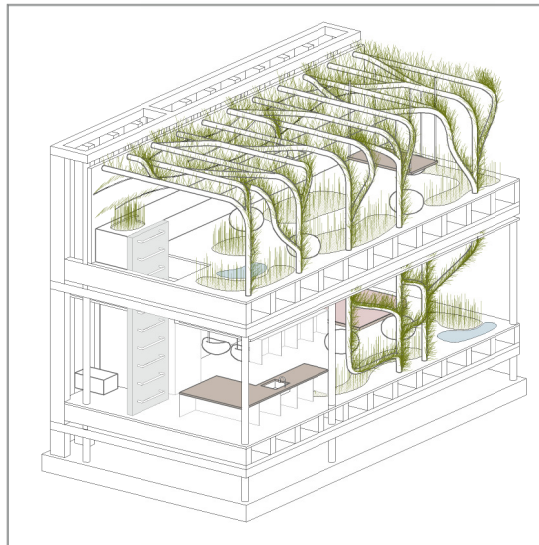
2. GREENHOUSE STYLE FACADE WITH WATER COOLING GRID



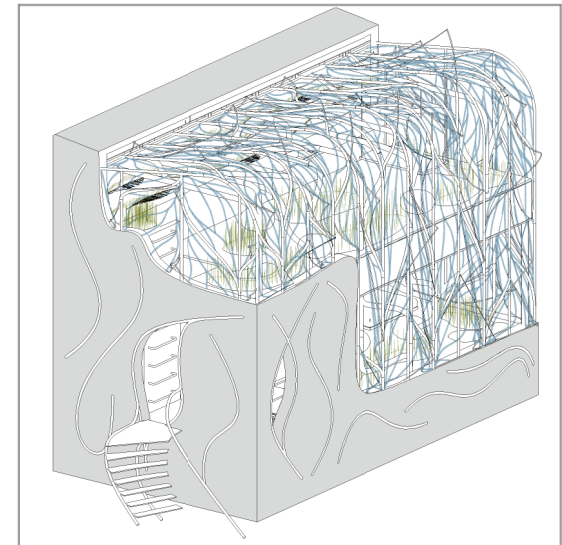
3. SECONDARY STRUCTURE AND INTERIOR SENSING SURFACES



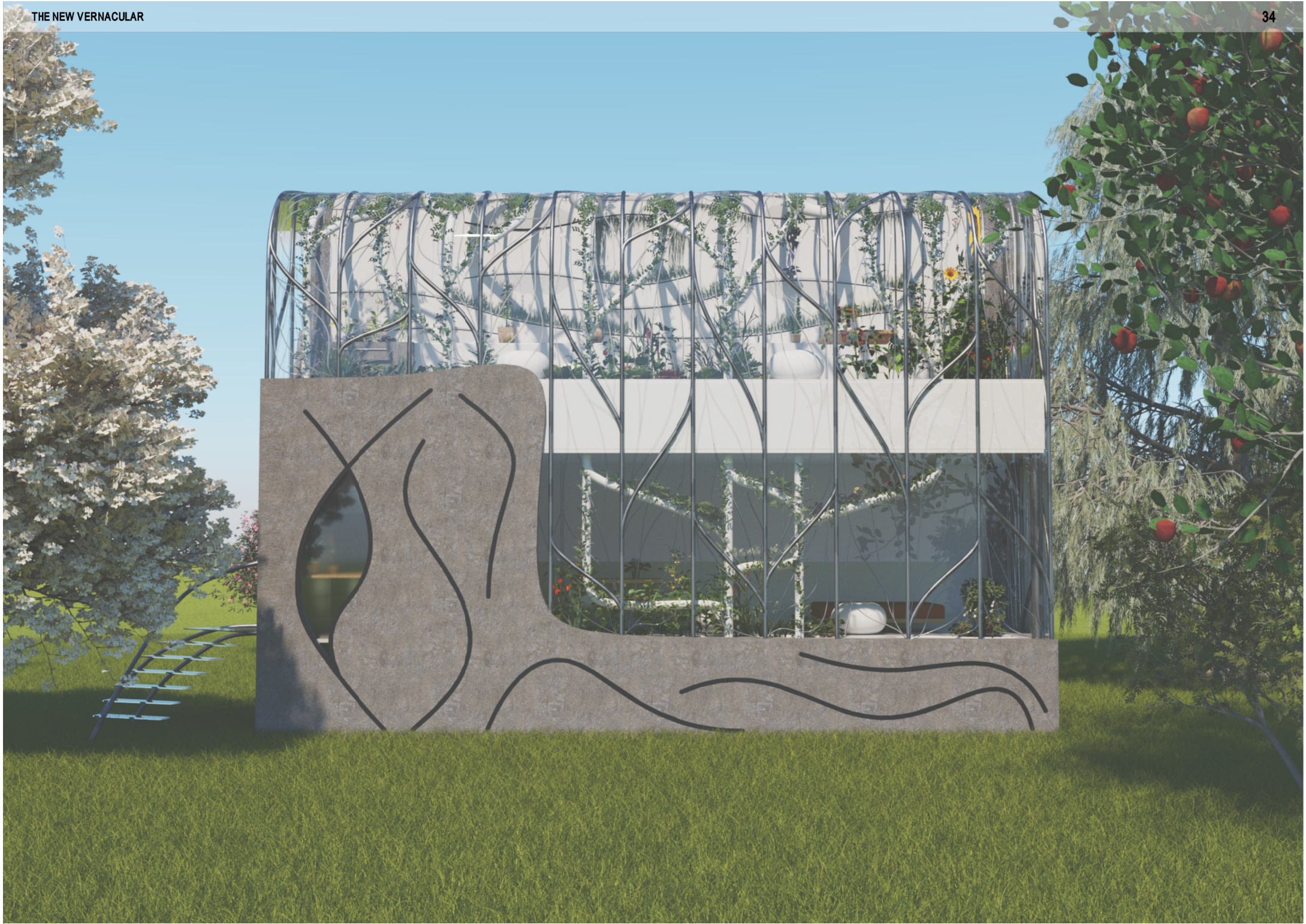
4. RESIDENCE AND HOME OFFICE ON UPPER FLOOR



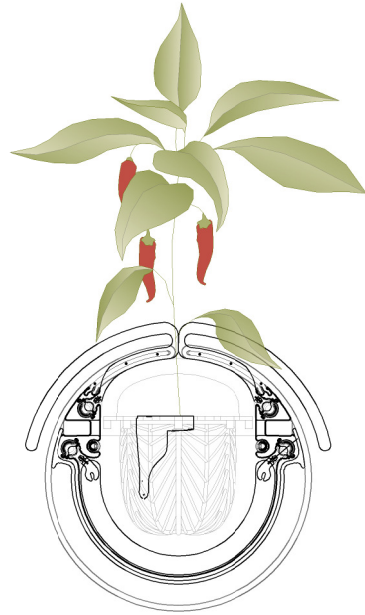
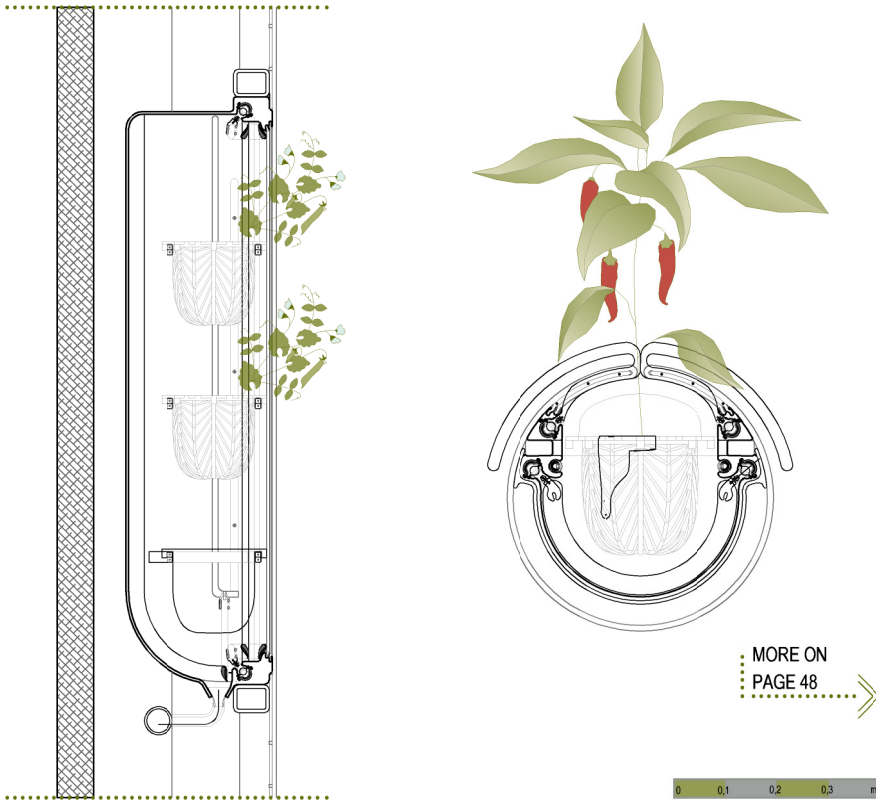
5. INDOOR GREENERY WHEREVER POSSIBLE



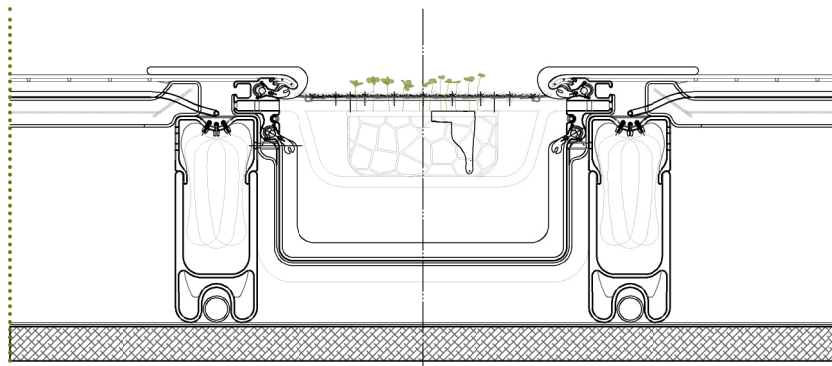
6. DETAILS AND VENTILATION OPENINGS

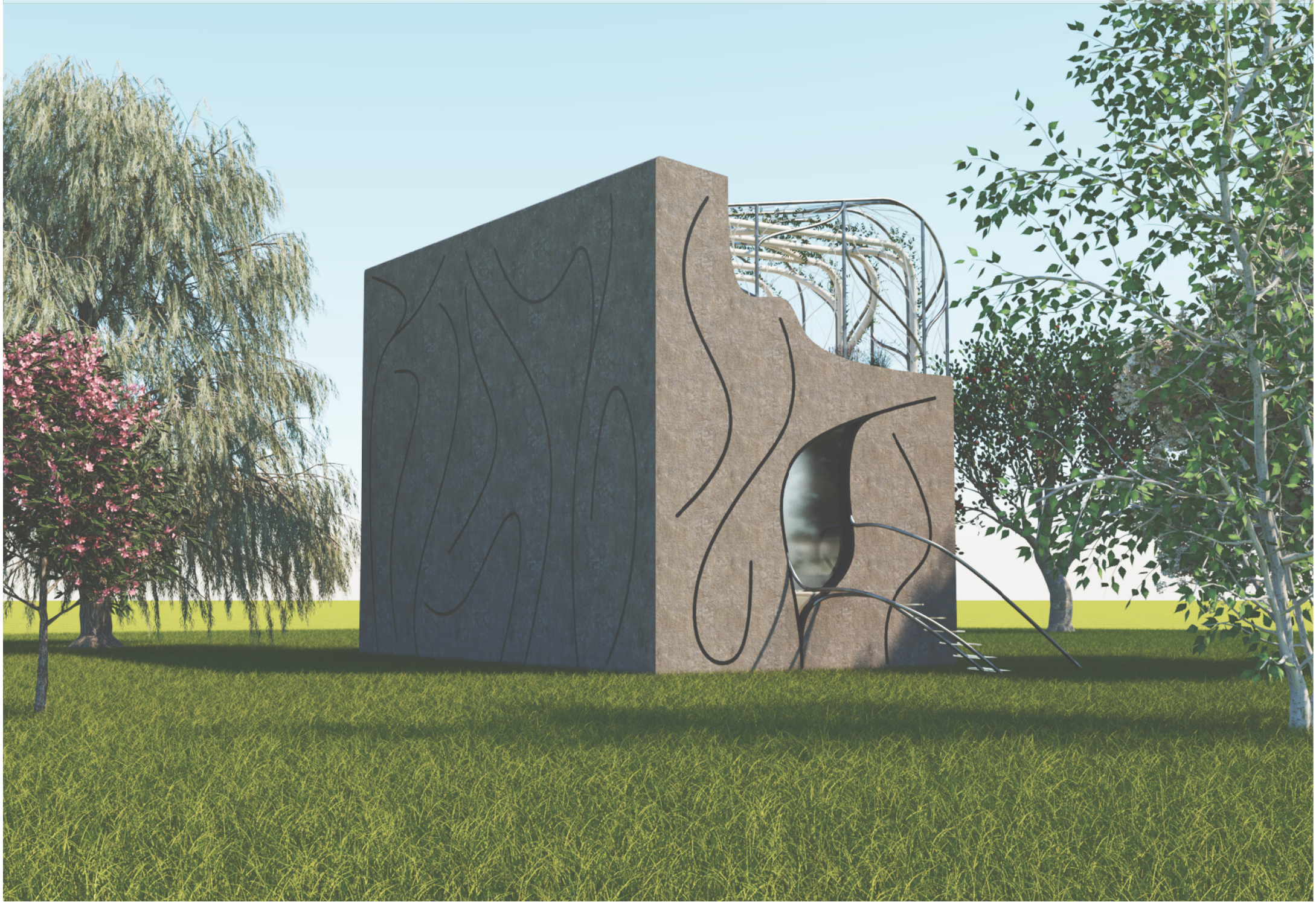


DETAILS AND CONSTRUCTION



MORE ON
PAGE 48 >>>





PENTHOUSE 2020

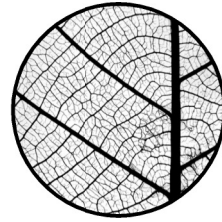
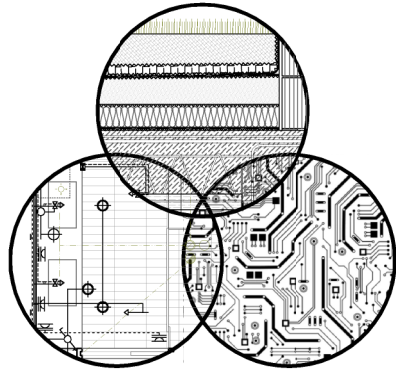
LOCATION: UNDISCLOSED HIGHRISE

PROGRAM: RESIDENTIAL

AREA: 40 m²

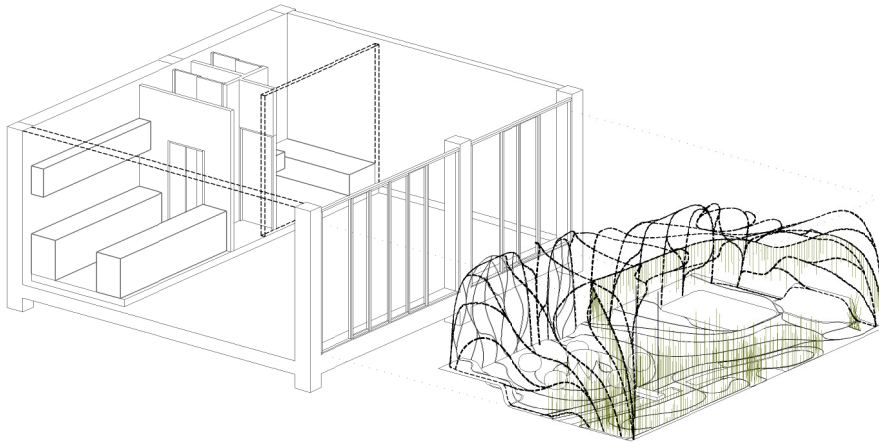
DATE: JANUARY 2020

ARCHITECTURE

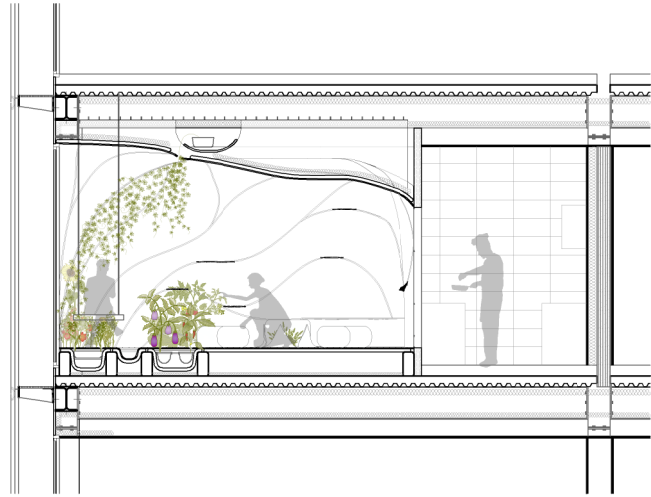


INTEGRATED
ORGANIC SPACE

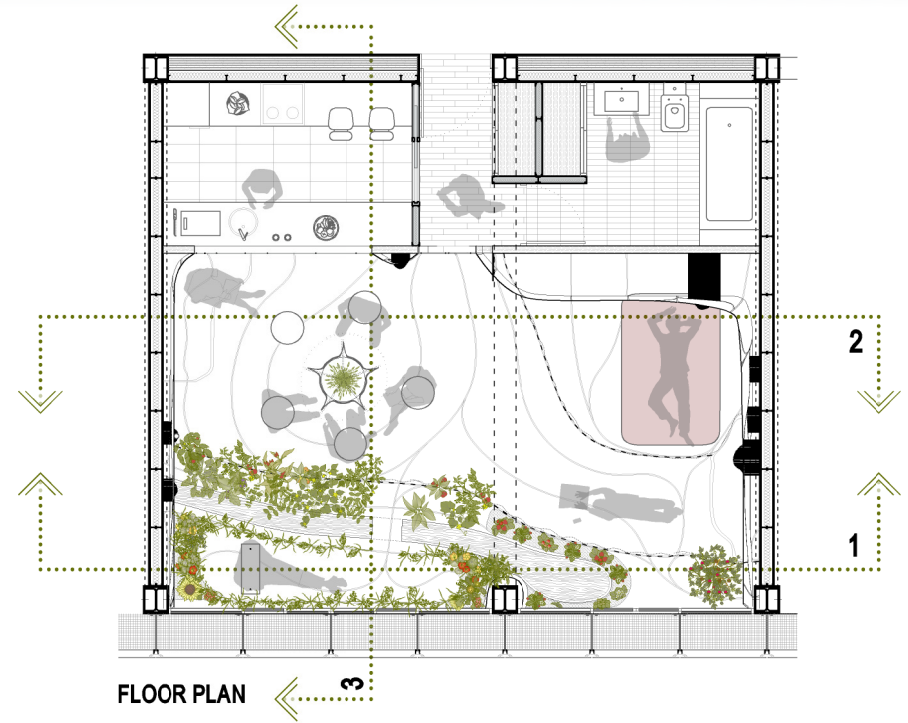
APARTMENT FOR REFURBISHMENT



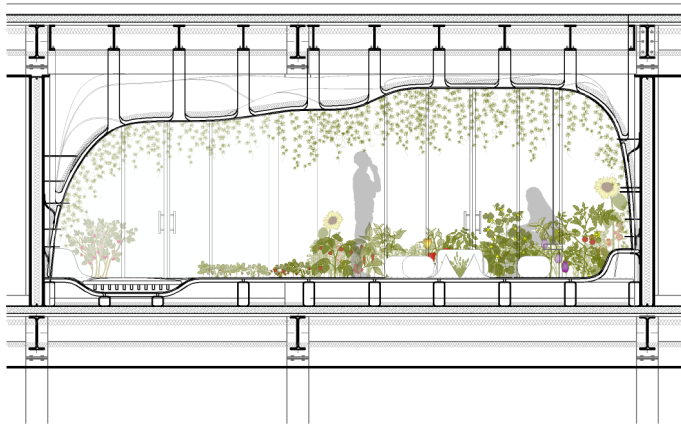
APARTMENT PLANS



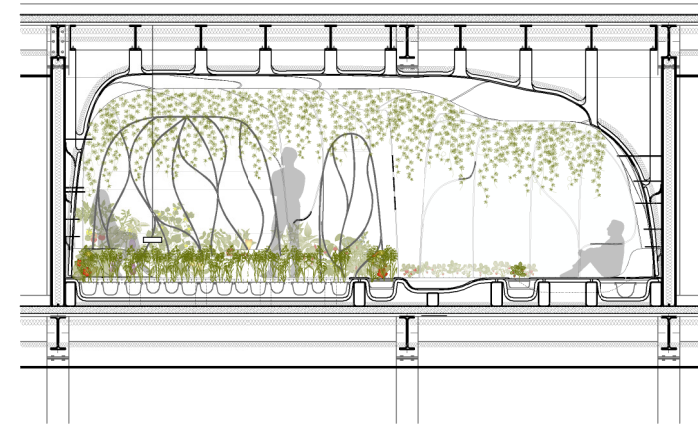
SECTION 3



FLOOR PLAN



SECTION 2

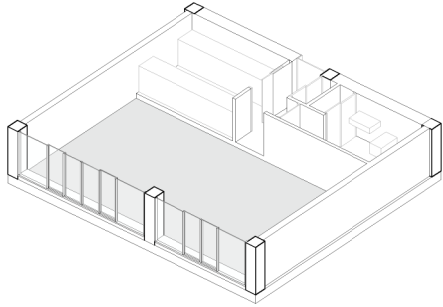


SECTION 1

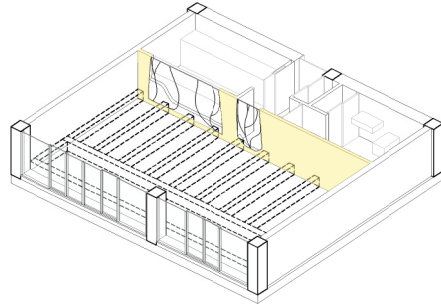


SPACE COMPOSITION AND USE

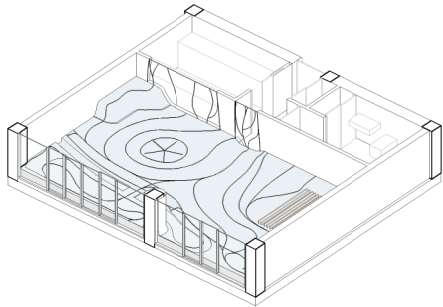
0. ORIGINAL APARTMENT SPACE



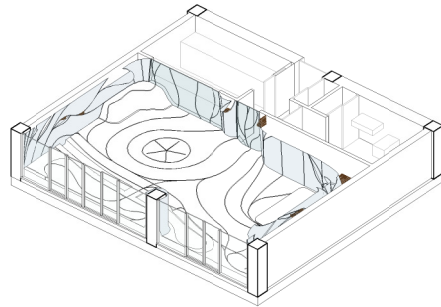
1. UNDERLYING STRUCTURE AND BACK WALL



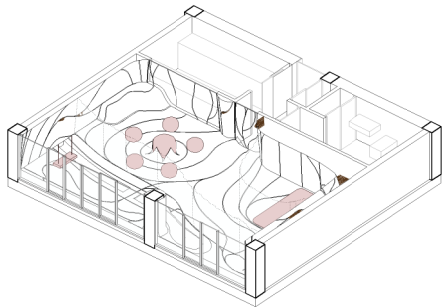
2. FLOOR SURFACE WITH BEDDING STRUCTURE



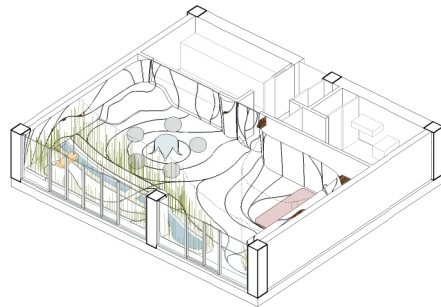
3. WALL SURFACES WITH INFOLDING STORAGE COVERS



4. COMPONENTS: TABLE CURTAINS AND WINDOW SWING

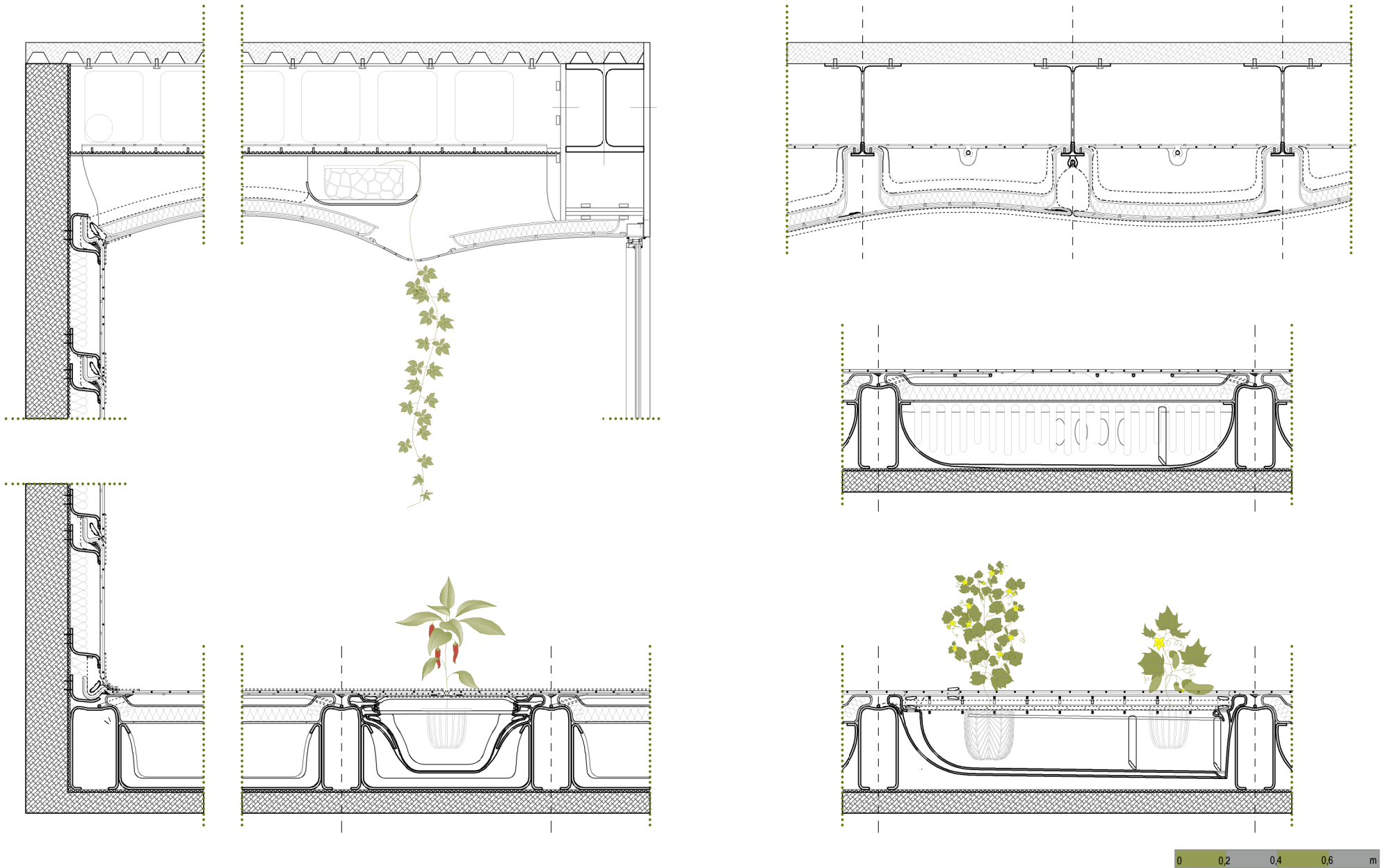


5. INNER GARDEN VEGETATION FRAMING THE WINDOW





SPACE CONSTRUCTION

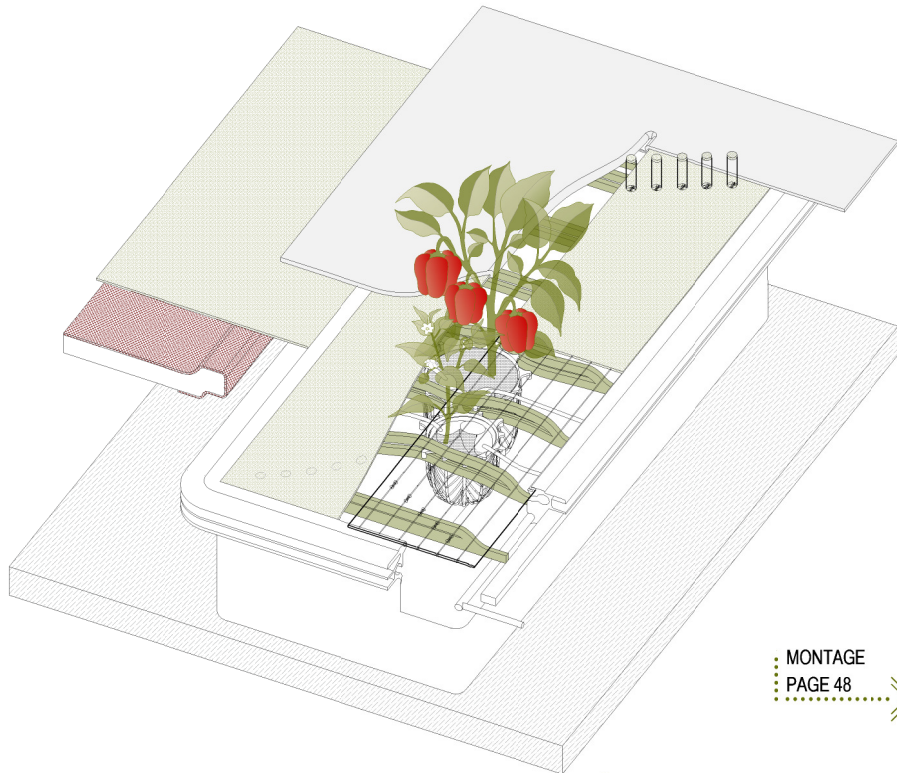




SPACE DETAILS



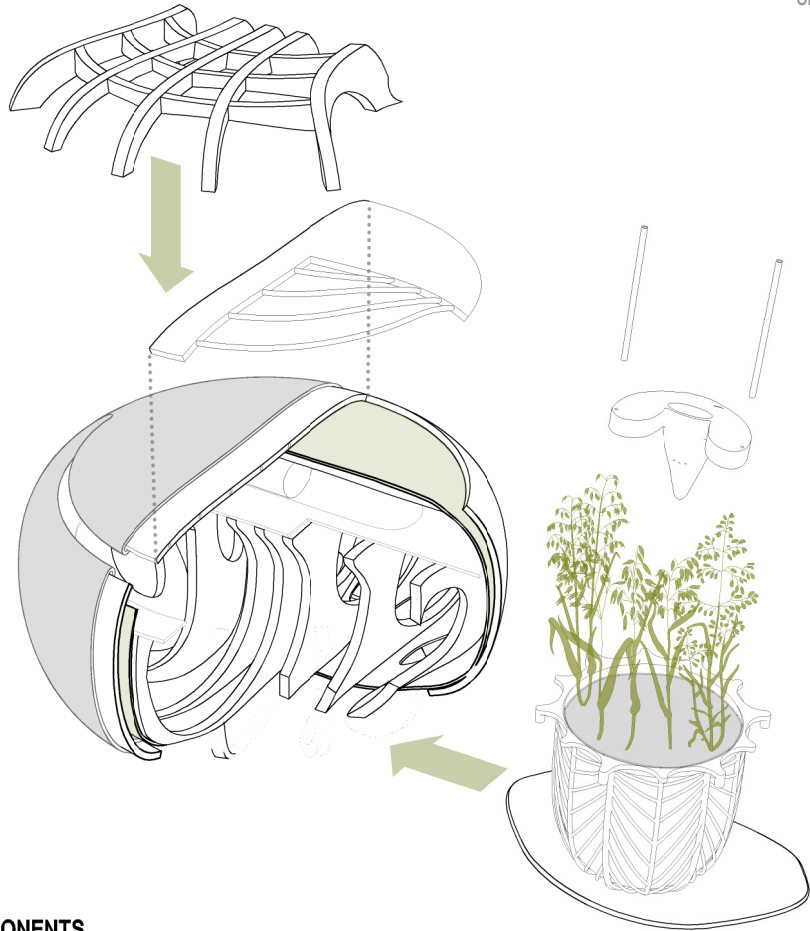
APARTMENT LOCATION AND REMODELATION PROPOSAL





MVP SEAT

SEPTEMBER 2021



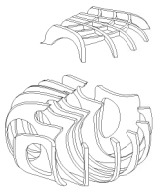
COMPONENTS



SILICONE SKIN



OUTER SHELL AND FLEXIBLE SEAT



INNER STRUCTURE



PLANT HOLDER AND WATERING NOZZLE



DRAINED PLANTER

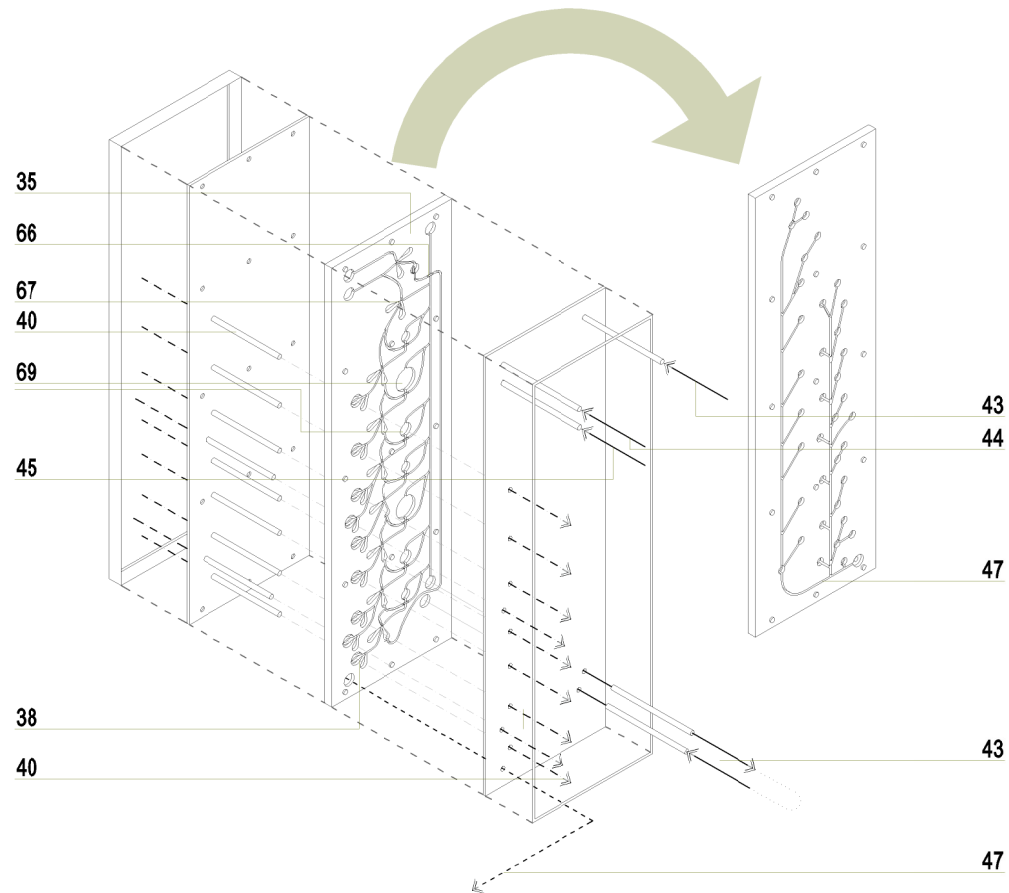




CONSTRUCTIVE SYSTEMS

2018-2022

FLUIDIC PROGRAMBOARD ASSEMBLY

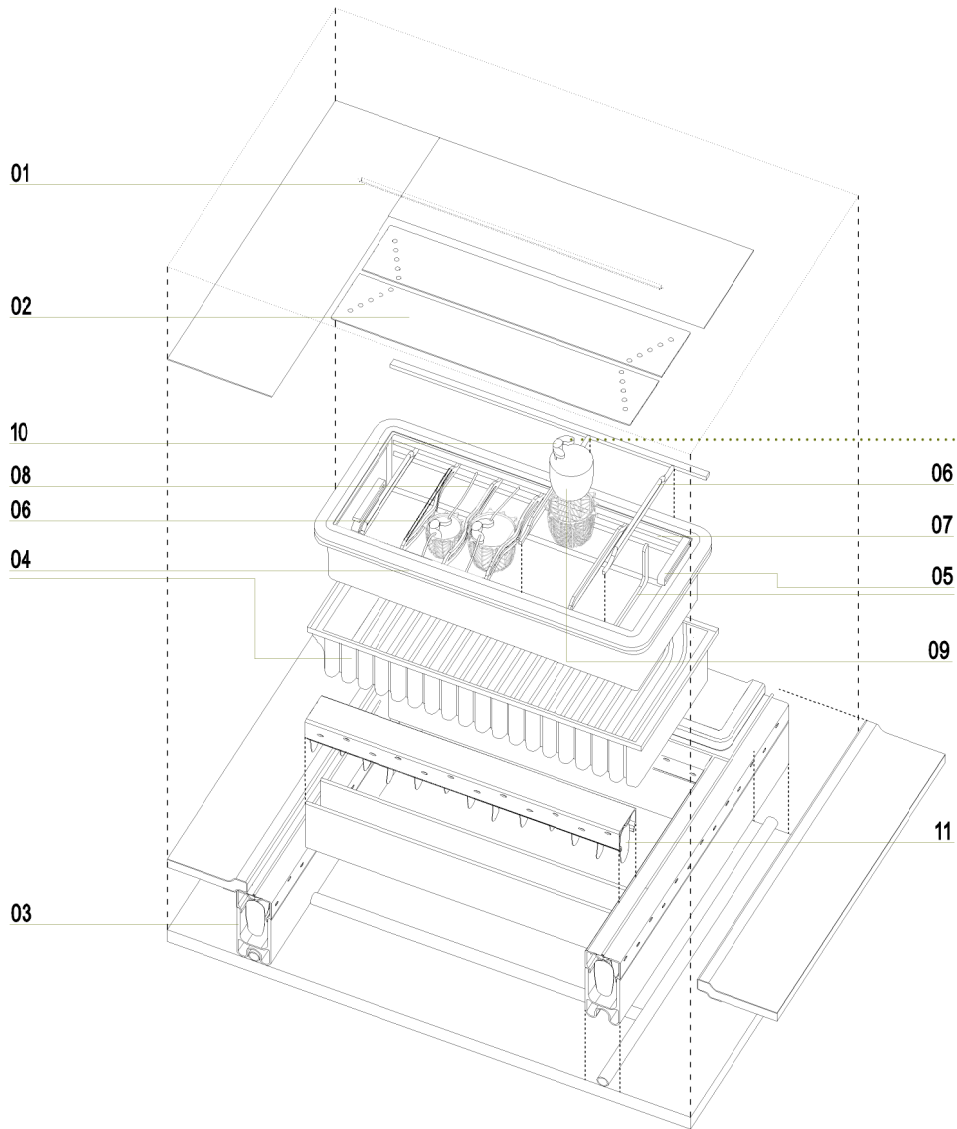


DESCRIPTION
PAGE 49

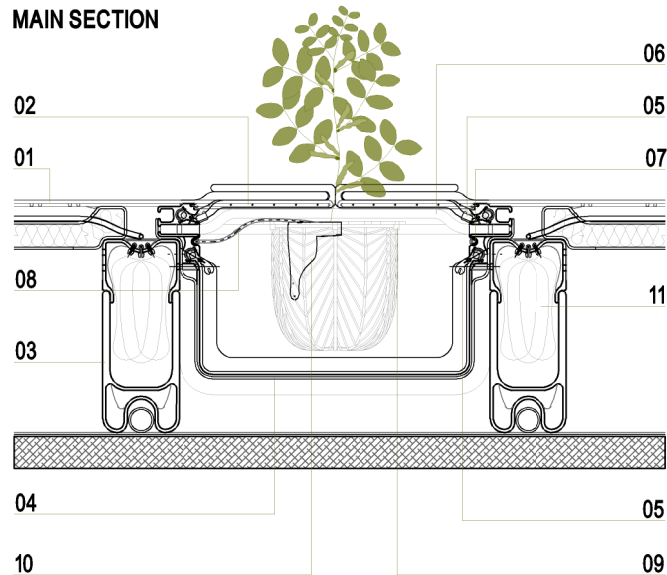


EASY MAINTENANCE INDOOR CULTIVATION SYSTEM

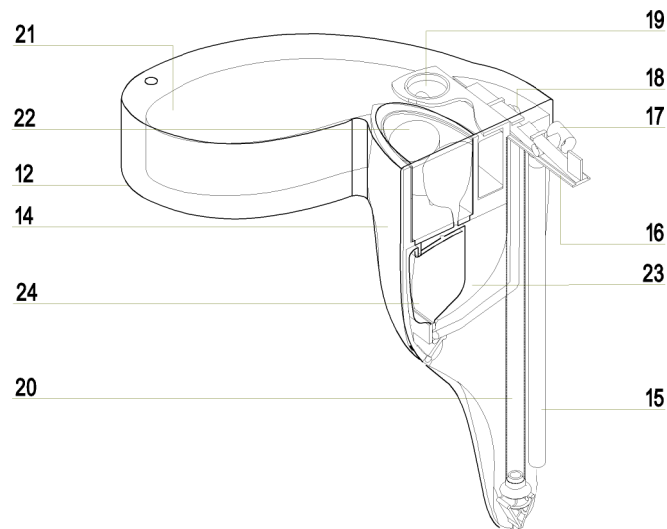
COMPONENTS AND ASSEMBLY DIAGRAM



MAIN SECTION



WATERING AND NUTRIENT MIXING NOZZLE



MAIN COMPONENTS

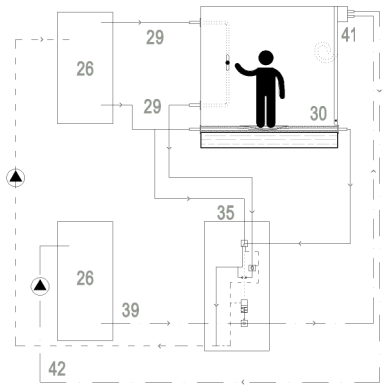
- 01 EXTERIOR CONTINUOUS SURFACE
- 02 FLEXIBLE REINFORCED OPENABLE PROTECTIVE SURFACE
- 03 UNDERLAYING STRUCTURE
- 04 DRAINED CULTIVATION CAVITY
- 05 CLEANING TONGUES WITH A PROPELLING SYSTEM (DET. PAGE ...)
- 06 FLEXIBLE PLANT-HOLDING STRUCTURAL BRANCHES
- 07 MAIN WATER SUPPLY CONDUIT WITH CONNECTOR VALVES
- 08 FLEXIBLE IRRIGATION HOSE CONDUITS
- 09 PAPER LINED BASKET PLANTERS WITH EDGE HOOKS
- 10 WATERING AND NUTRIENT SUPPLY NOZZLE
- 11 AUXILIARY WATER-POWERED ROOT VENTILATION PROPELLING SYSTEM

WATERING NOZZLE

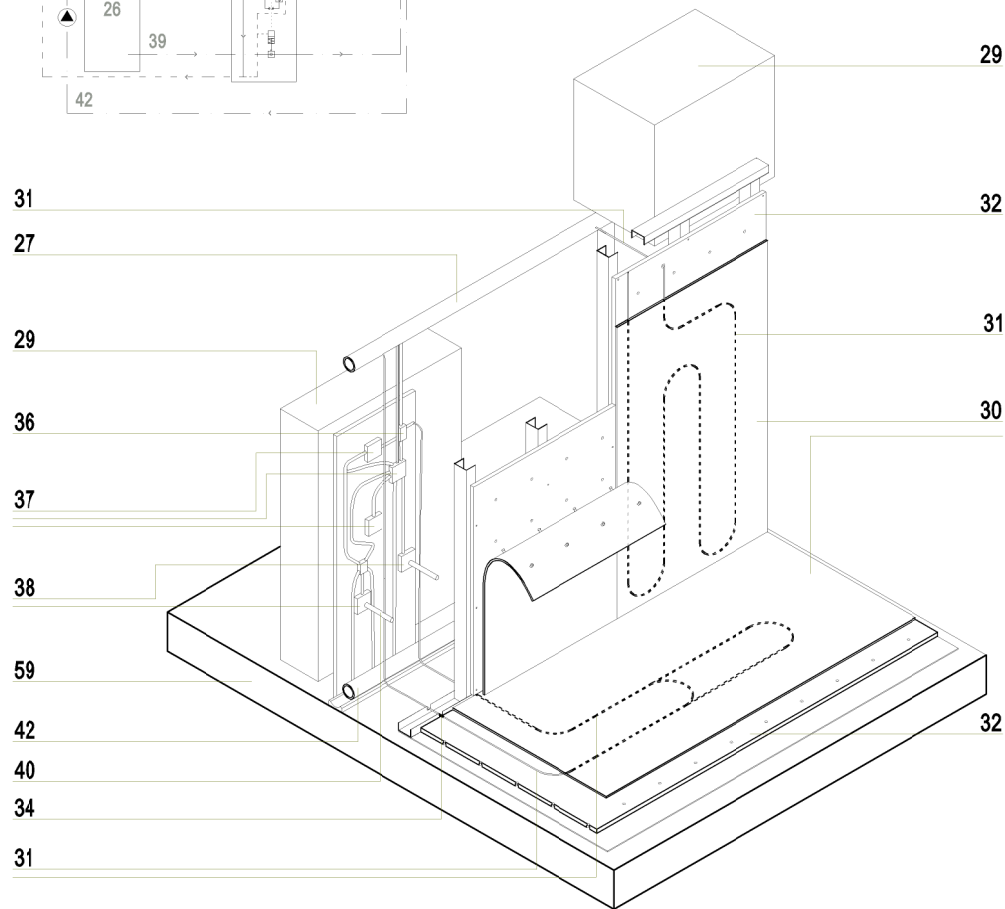
- 12 EXTERIOR PROTECTIVE SURFACE
- 13 PROTECTIVE WINGED EXTENSIONS
- 14 BASE PEG-SHAPED BLOCK
- 15 VERTICAL HUMIDITY-DETECTING ORIFICE
- 16 WATER SUPPLY CONTROLLING DOUBLE TWEEZER
- 17 T-SHAPED WATER SUPPLY CUTOUT VALVE
- 18 HYDRAULIC NUTRIENT SUPPLY SHUT-OFF HOSE VALVE
- 19 TEMPERATURE DEPENDING NUTRIENT SHARE MIXING DRUM
- 20 MAIN WATERING CONDUIT WITH A PASSIVE TIP CLOSING MECHANISM
- 21 BUTTERFLY WATER DEPOSIT FOR NUTRIENT MIXING
- 22 MULTICOMPONENT NUTRIENT SALTS STORAGE COMPARTMENT
- 23 GROOVED NUTRIENT MIXING CAVITY
- 24 FLEXIBLE NUTRIENT MIXING CHAMBER

HYDRAULIC SENSING AND AUTOMATION SYSTEM

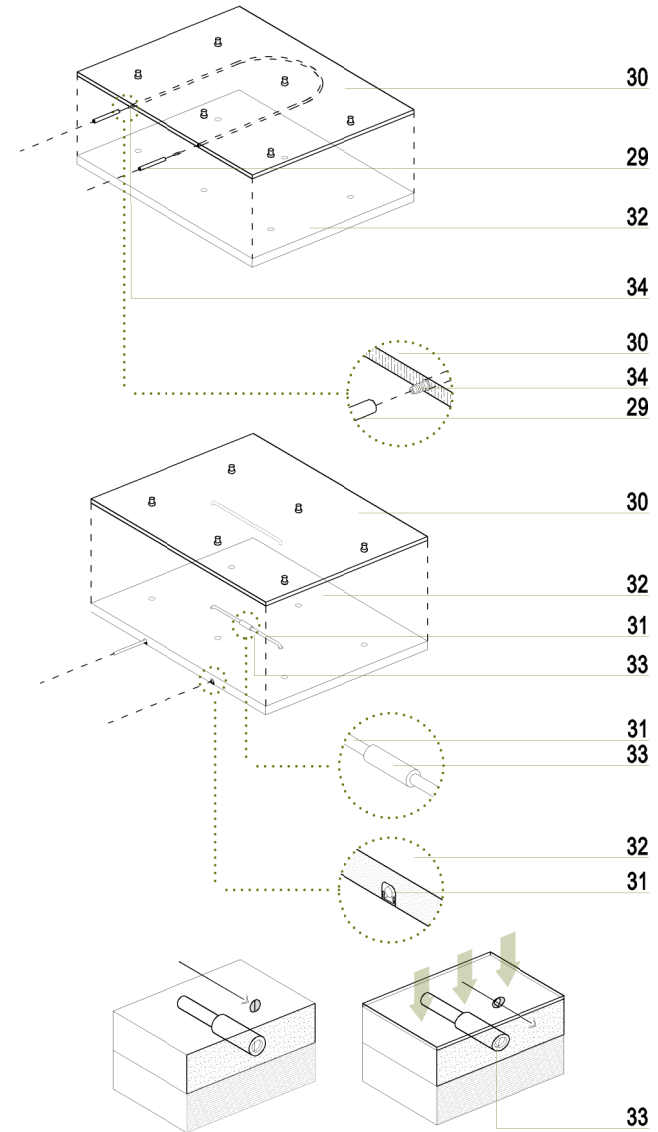
CONCEPT DIAGRAM



FUNCTIONAL SYSTEM ASSEMBLY



SENSING SURFACE DETAILS



MAIN COMPONENTS

- 25 SUPPORTING HYDRAULIC FACILITY NETWORK
- 26 FLUID DEPOSIT
- 27 FLUID CONDUIT
- 28 RECIRCULATION PUMP
- 29 SENSING CIRCUIT
- 30 FLEXIBLE SENSING SURFACE
- 31 FLEXIBLE SENSING CONDUITS
- 32 RIGID UNDERLYING BASE SURFACE
- 33 ONE-SPOT PRESENCE DETECTION VALVE
- 34 SURFACE-TO-WATER CONDUIT CONNECTOR VALVE
- 35 PROGRAM BOARD
- 36 OFFSET VALVE
- 37 LOGIC FUNCTION VALVES
- 38 OUTPUT VALVE
- 39 ACTUATION CIRCUIT
- 40 OUTPUT FLOW CIRCUIT
- 41 HYDRAULIC MECHANISM OR APPARATUS
- 42 RETURN FLOW CIRCUIT

CIRCUITS

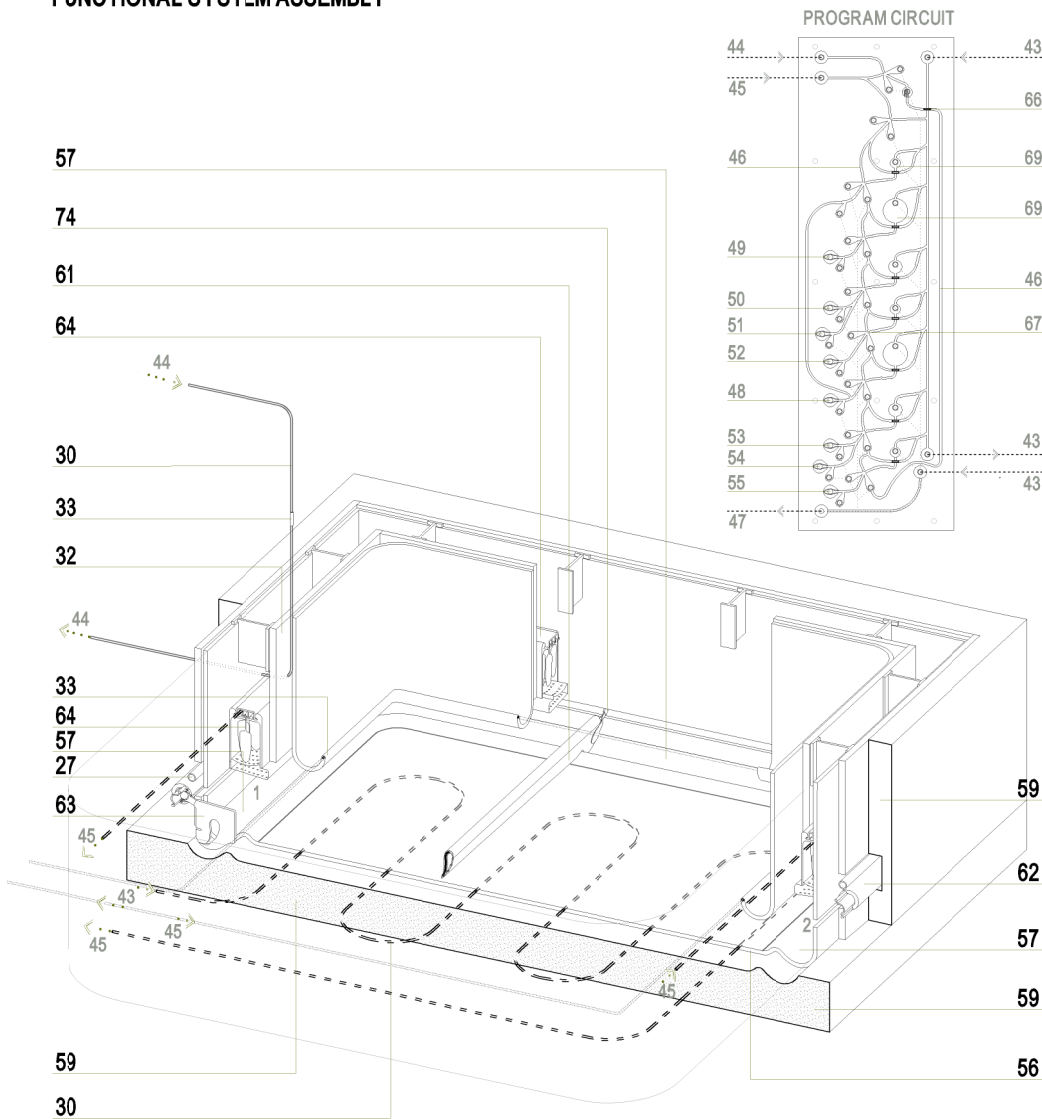
- 43 NORMAL STATE CIRCUIT
- 44 OFFSET CIRCUIT
- 45 VENTILATION CIRCUIT
- 46 PROGRAM CIRCUIT
- 47 RUNOFF/RETURN CIRCUIT

OUTPUT FUNCTIONS

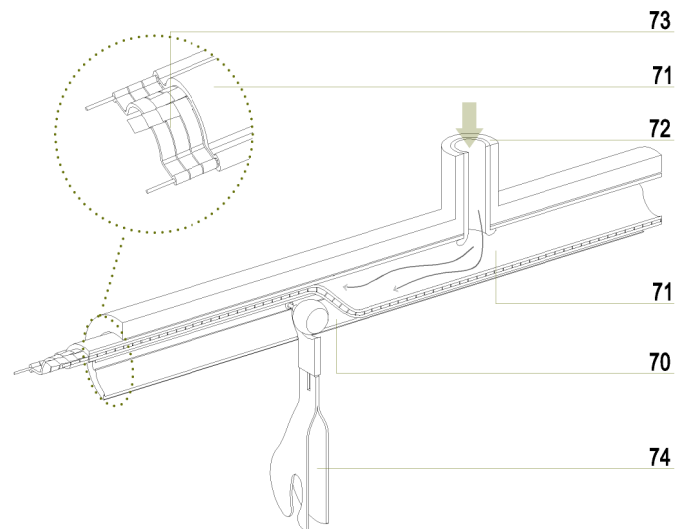
- 48 MOVE TONGUE BACK
- 49 MOVE TONGUE FORTH
- 50 MOVE CLEANING PECE 2 FORTH
- 51 SHOWER THE TROUGH CAVITY 2
- 52 MOVE CLEANING PECE 2 BACK
- 53 MOVE CLEANING PECE 1 FORTH
- 54 SHOWER THE TROUGH CAVITY 1
- 55 MOVE CLEANING PECE 1 BACK

AUTOMATED SELF-CLEANING FLOOR SYSTEM

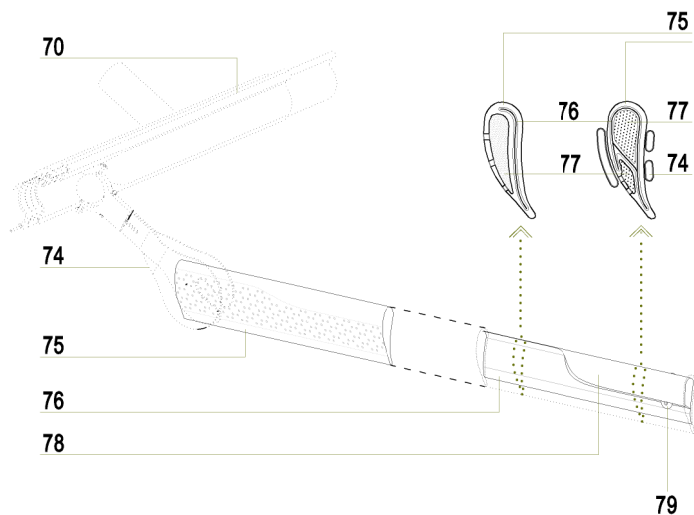
FUNCTIONAL SYSTEM ASSEMBLY



HYDRAULIC PROPELLING SYSTEM



CLEANING TONGUE DETAILS



MAIN COMPONENTS

- 56 CONTINUOUS FLOOR SURFACE WITH EMBEDDED HYDRAULIC CIRCUITRY
- 57 SIDE TROUGHS FOR DRAINAGE
- 58 FLEXIBLE LATERAL SURFACES WITH EMBEDDED CIRCUITRY
- 59 UNDERLAYING FLOOR AND WALL SURFACE
- 60 CLEANING RUNOFF CAVITY SURFACE
- 61 CLEANING TONGUE
- 62 CLEANING TONGUE PROPELSION MECHANISM
- 63 TONGUE AND TROUGH BOTTOM CLEANING AND PIECE
- 64 HYDRO-POWERED VENTILATION CIRCUIT AND TROUGH SHOWER
- 65 CLEANING PROGRAM OFFSET VALVE

LOGIC FUNCTIONS

- 66 PERMANENT FLOWALTERING VALVE
- 67 AND VALVE
- 68 OR VALVE
- 69 DELAY OR TEMPORIZER DEPOSIT

PROPELLING MECHANISM

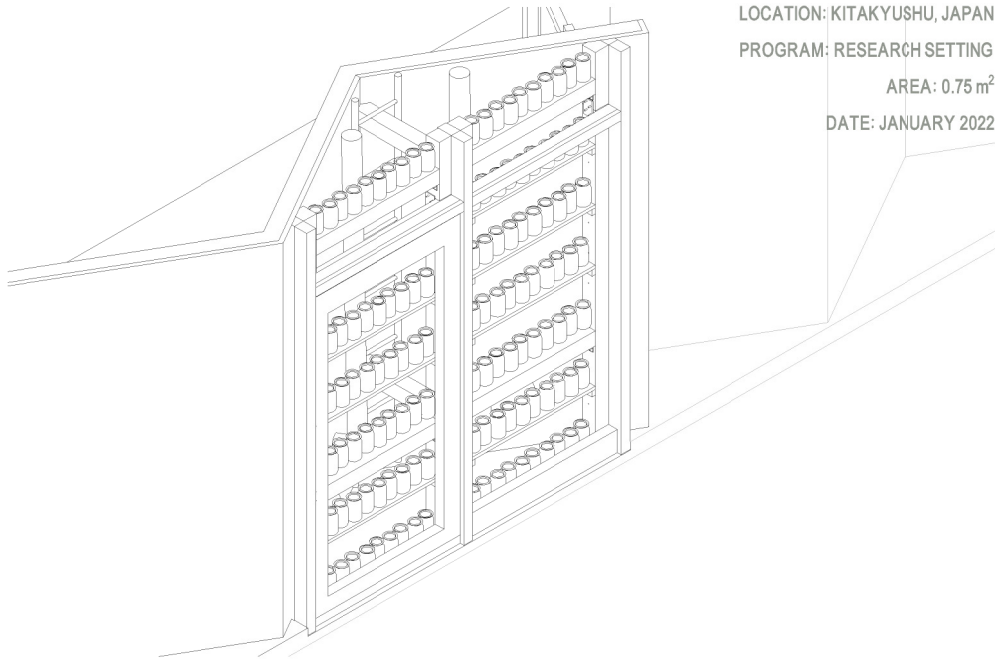
- 70 BASE CAVITY WITH FLEXIBLE FOLDED HOSE ATTACHED
- 71 EXPANSIVE FOLDED IMPULSE-PROPELLING HOSE
- 72 CONNECTION TO ACTUATION CIRCUIT FLOW
- 73 SCALY EMBEDDED WAVE PROPELLING SURFACE
- 74 MOVING APPARATUS HOLDER CONNECTION

CLEANING TONGUE

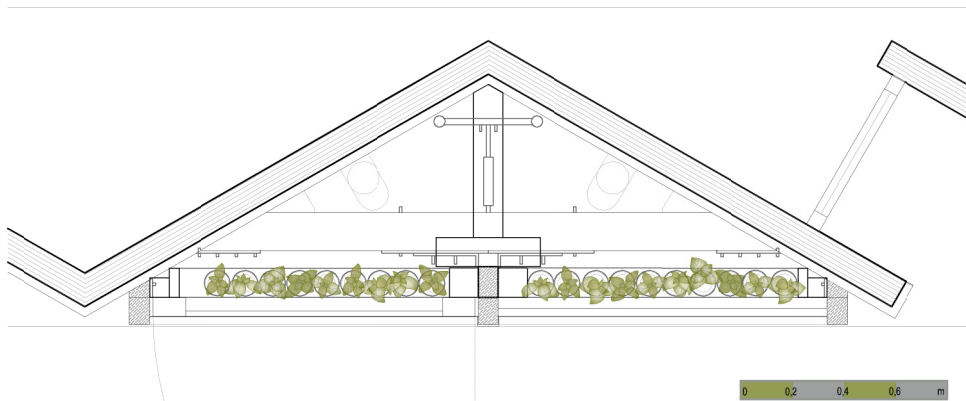
- 75 SILICONE SLEEVE WITH PERFORATIONS ON ONE SIDE
- 76 INNER FLEXIBLE WATER-CONTAINING HOLLOW BACKBONE
- 77 WATER FILLED CLEANING CAVITY
- 78 SIDE SOAP CONTAINER
- 79 WATER FILLUP PRESSURE VALVE

GREEN TROMBE WALL

LOCATION: KITAKYUSHU, JAPAN
PROGRAM: RESEARCH SETTING
AREA: 0.75 m²
DATE: JANUARY 2022

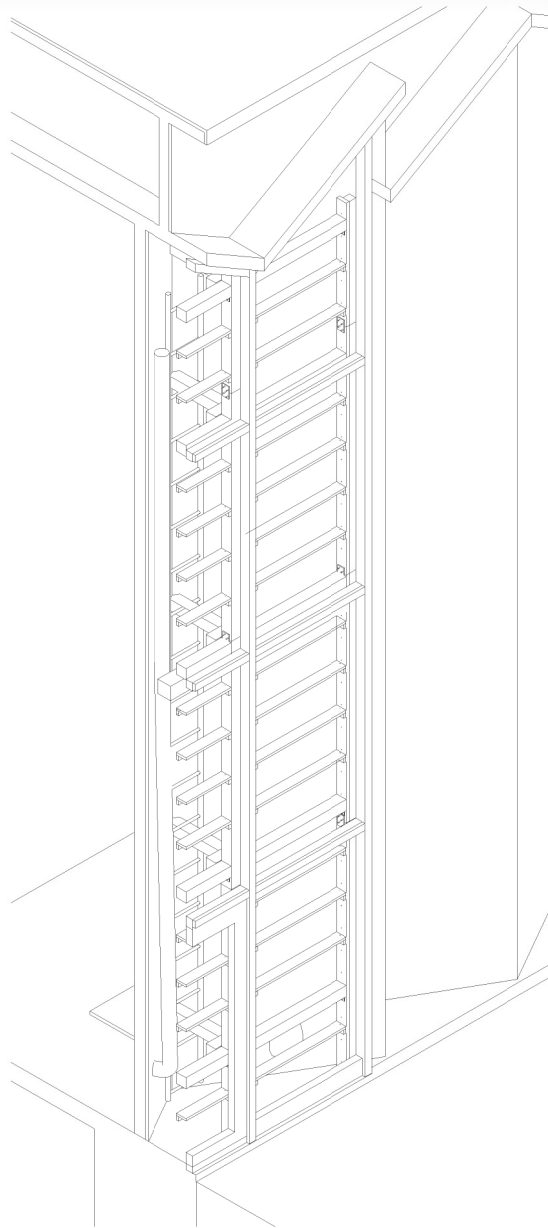
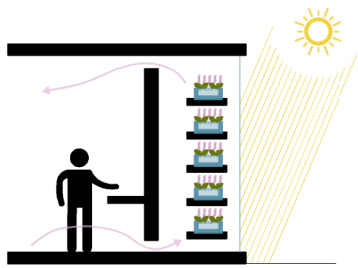


SETUP PLAN





SETUP SECTION










CONTENTS


BIOGRAPHY AND RESUMÉ	03
LIST OF CONTENTS	05
PRESCHOOL AND RESIDENCE	07
HIBIKINO REFURBISHMENT	13
ISMART BUILDING	15
RESEARCH GREENHOUSE	23
THE NEW VERNACULAR	29
PENTHOUSE 2020	37
MVP SEAT	45
CONSTRUCTIVE SYSTEMS	47
GREEN TROMBE WALL	51


CONTACT

 Iryna Borys Bohoshevych
イリナ ボリス ボゴシェヴィチ

 807-0804, Fukuoka-ken,
Kitakyushu-shi, Yahatanishi-ku,
Iseigaoka 6-5, 103
〒807-0804 福岡県北九州市八
幡西区医生ヶ丘6丁目5番103号

 +81 070 4423 0931

 irynaborys.es@gmail.com
iryna@irynaborys.com

 web: irynaborys.com

